



## SİSTEMLER KATOLOĞU



**İZO WD 64 SERİSİ**



Kaliteyi takip etmiyor kaliteye yön veriyoruz.

Kalite bizim için vazgeçilmezdir.



Türk alüminyum sanayinin en güçlü firmalarından biri olan AKPA Alüminyum, Euro normlarına uygun olarak ürettiği her üründe teklif aşamasından ürünün teslimatına kadar Kalite Yönetim Sistemi uyguluyor.

AKPA Alüminyum TSE 755-1, TSE 5247 en 12020-01, TSE 4922, ISO 9001:2000 CE belgelerinin yanında QUALICOAT ve IFT ROSENHEIM kalite sertifikalarına sahip olarak tüm ürünlerinde yüksek kalite standartlarını belgelendirmiştir.

Tüm üretim süreçlerinde yüksek kalitenin önemini bilen içinde uzman 550 eğitilmiş ve deneyimli personeli ile 80000 metrekarelik tesislerinde;

Yıllık 1400 adet kalıp üretimi

Aylık 4 pres hattı ile toplamda 2000 ton profil üretimi

Aylık 1000 ton eloksal üretimi

Aylık 1200 ton Elektrostatik üretimi

Aylık 100 ton ahşap kaplama film üretimi kapasitesine sahiptir.





AKPA Alüminyum yatırımlarına hız kesmeden devam ediyor.



1986 yılından beri Türk alüminyum sektörünün güçlü oyuncularından biri olarak varlığını devam ettiren AKPA Alüminyum, dökümhane, kalıp üretim hattı, ekstrüzyon tesisi, boya hattı, eloksal hattı, mekanik arıtma ve yükleme departmanları ile entegre bir tesistir.

Kurulduğu günden bu yana sürekli büyüme misyonuyla hareket eden AKPA Alüminyum, sektörün ihtiyaçları doğrultusunda yeni yatırımlar yaparak sektördeki güçlü konumunu sürdürüyor.

Tüm üretim süreçlerinde yüksek müşteri memnuniyetini esas alan AKPA Alüminyum, modern üretim tesislerinde, inovatif ürün gamını yurt içi ve yurtdışından tüm müşterilerine güvenle sunuyor.

Yurtiçi pazarlarındaki güçlü konumunu yurtdışı pazarlarda da devam ettiren AKPA Alüminyum, kaliteli ürünlerini tüm dünyaya güvenle ulaştırıyor.



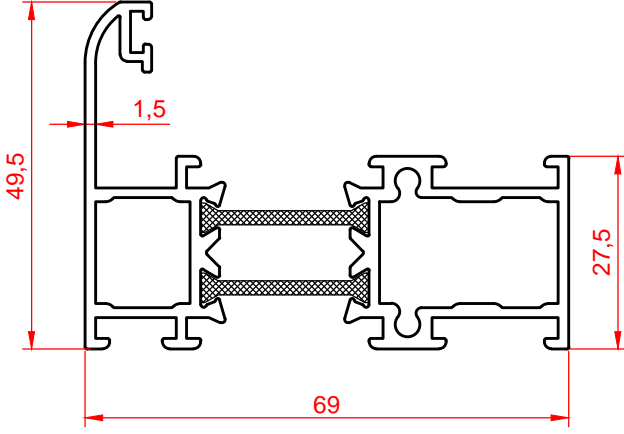
**ALÜMİNYUM PROFİLLERİN GENEL TEKNİK ŞARTNAMESİ**

SIRA NO	KATSAYILAR	DEĞERİ	BİRİMİ
1.	Özgül Ağırlık	2.71	gr / cm <sup>3</sup>
2.	Kullanılan Takoz	AlMgSi0.5	DIN - Almanya
		6063	BS - İngiltere
		60	ETIAL - Türkiye
3.	Genleşme Katsayısı	23.4	20 - 100 °C
4.	Elastisite Modülü	6900	Kg / mm <sup>2</sup>
5.	Çekme Mukavemeti	17.5	( 24 C de Kg / mm <sup>2</sup> )
6.	Uzama	% 8	Delta L / L* 100 ( 50 mm uzunlukta)
7.	Sertlik	60 - 65	Brinell ( HB ) Kg / mm <sup>2</sup>
8.	Akma Mukavemeti	14	Kg / mm <sup>2</sup>
9.	Kesme Mukavemeti	13	Kg / mm <sup>2</sup>
10.	Boyanın Kalınlığı	70 - 80	Micron
11.	Eloksal Kalınlığı	10 - 12	Micron
	(Eloksal kalınlığı isteğe bağlı olarak 16 micron'a kadar çıkabilir.		

Boyalı profillerde, kesitlere göre birim ağırlık % 2 ~4 nispetinde artar.

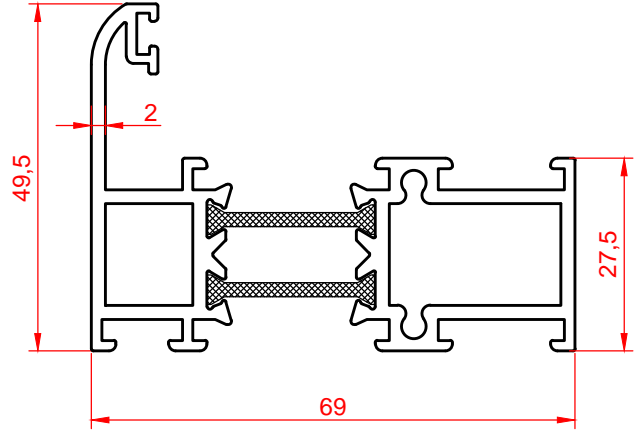
**AlMgSi0.5 ALAŞIMIN KİMYASAL BİLEŞİMİ**

Element	Si	Fe	Cu	Mn	Mg	Zn	Ti	Cr	Diğer Elementler	
									Herbiri	Toplam
Min.	0.40	0.18	-	-	0.45	-	-	-	-	-
Max.	0.45	0.22	0.02	0.03	0.50	0.02	0.02	0.02	0.02	0.10



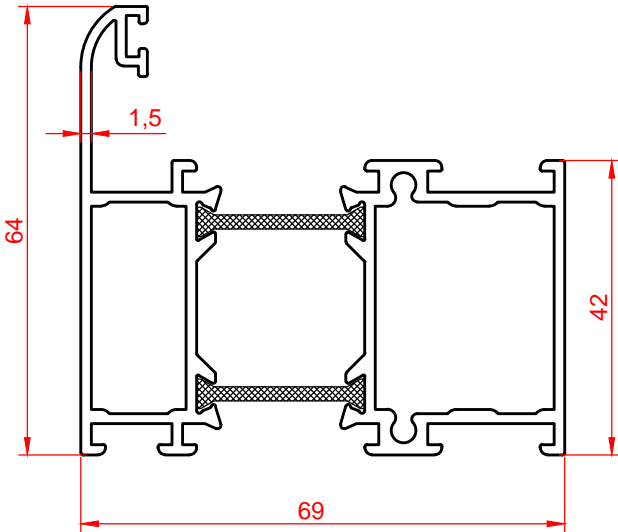
**64/1700 - 1701**

1.404 kg/m



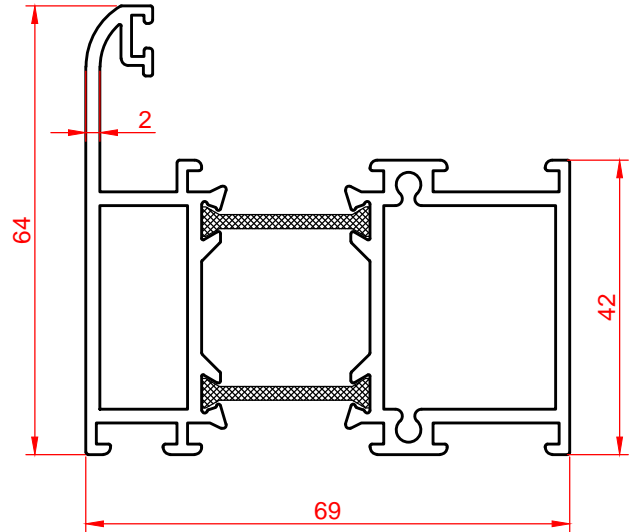
**64/1702 - 1703**

1.584 kg/m



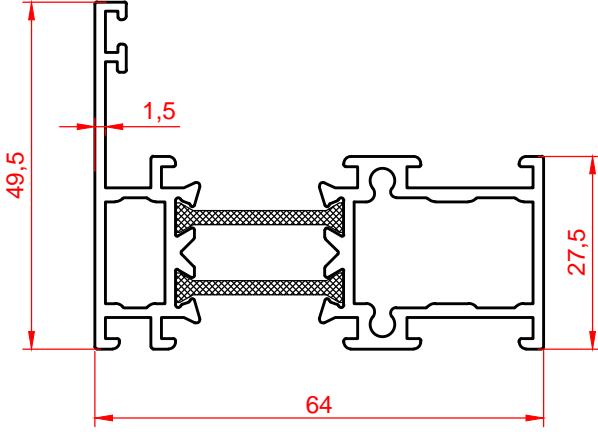
**64/1704 - 1705**

1.642 kg/m



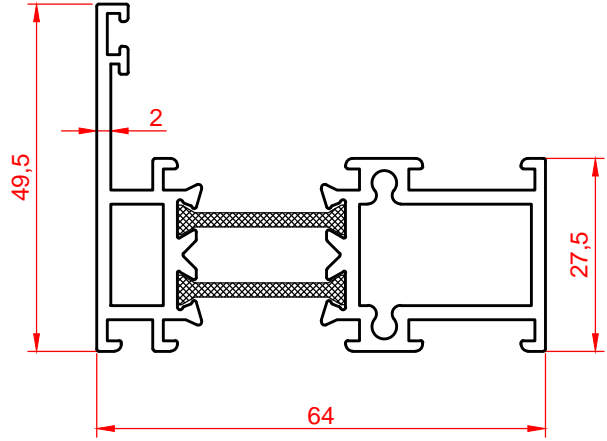
**64/1706 - 1707**

1.909 kg/m



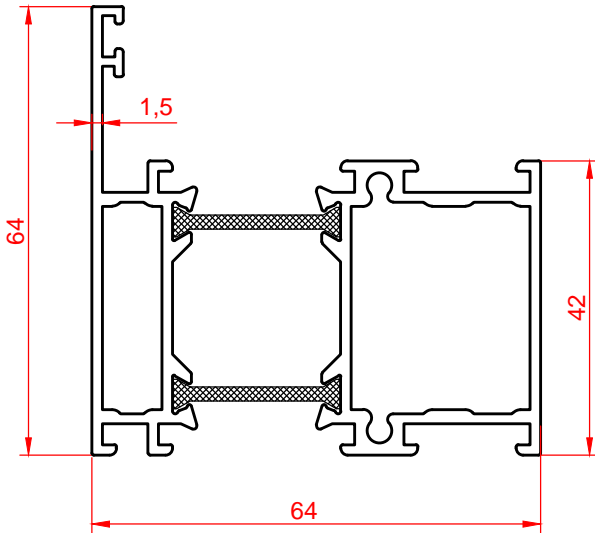
**64/1700 - 1768**

1.262 kg/m



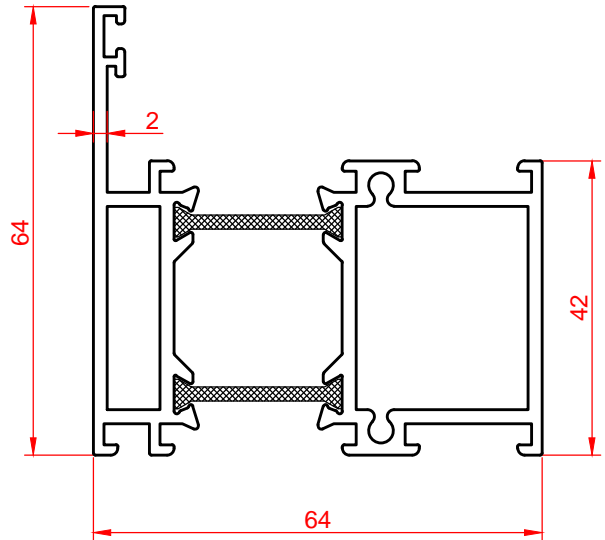
**64/1702 - 1770**

1.481 kg/m



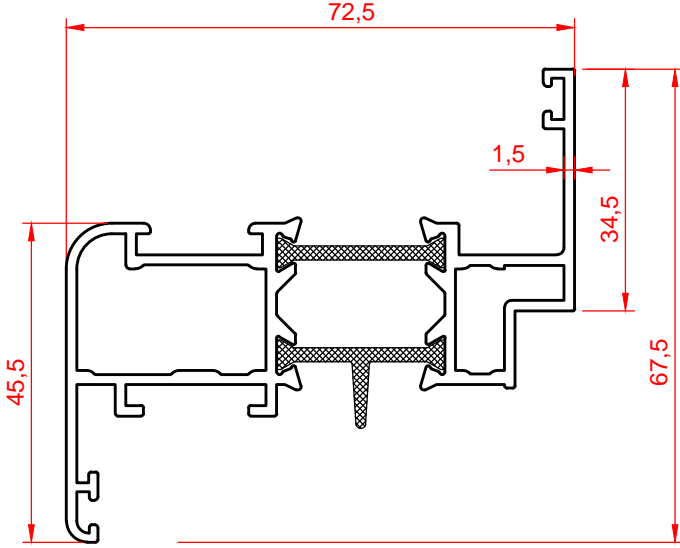
**64/1704 - 1769**

1.502 kg/m

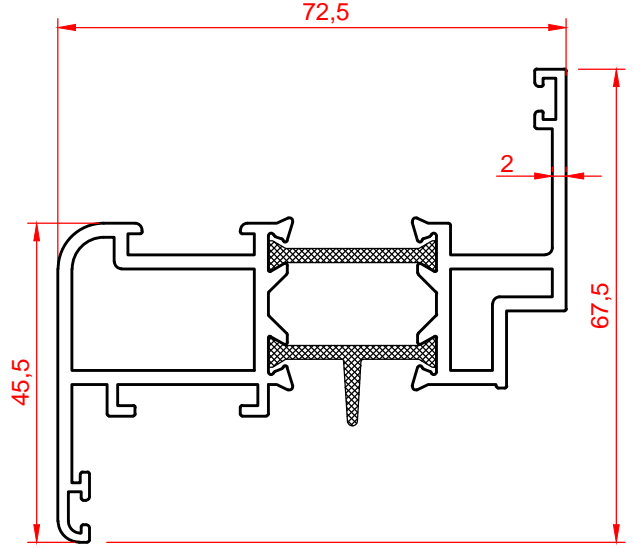


**64/1706 - 1771**

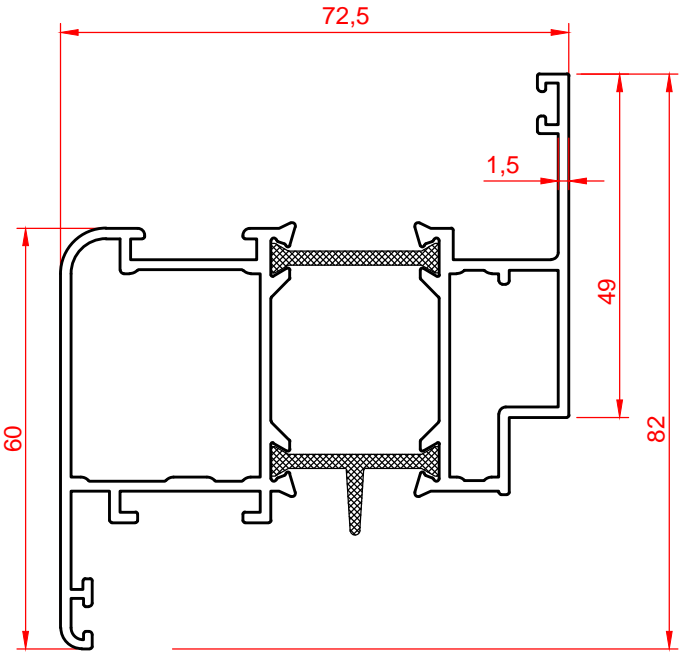
1.803 kg/m



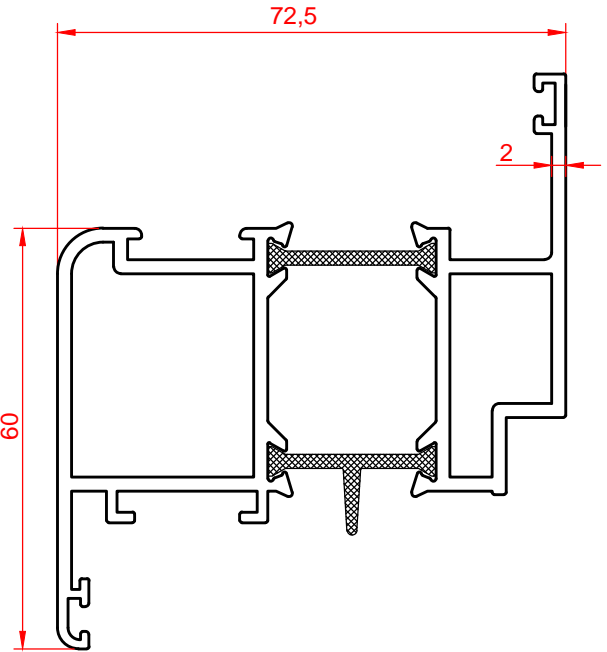
**64/1708 - 1709**  
1.345 kg/m



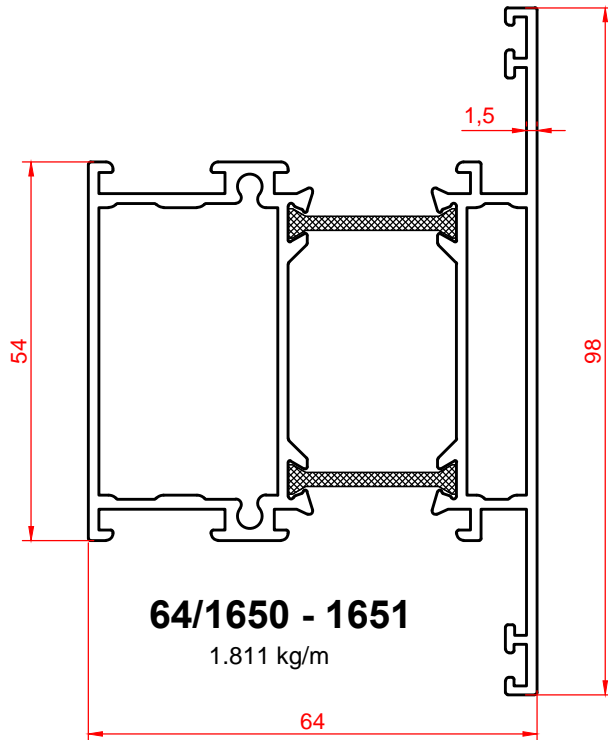
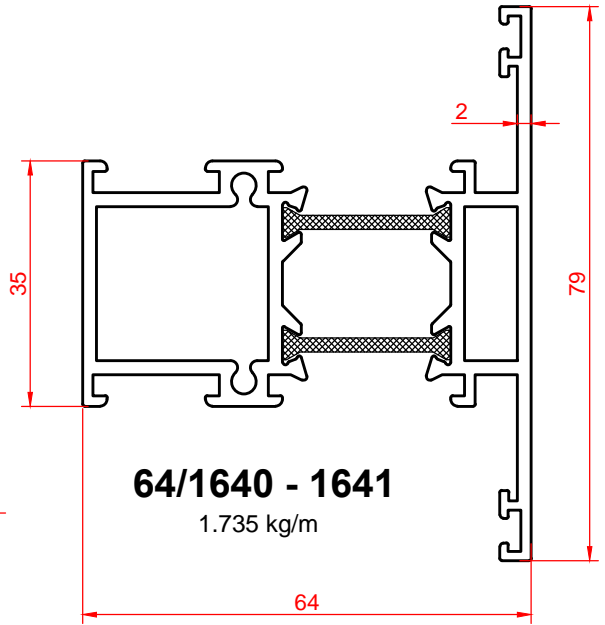
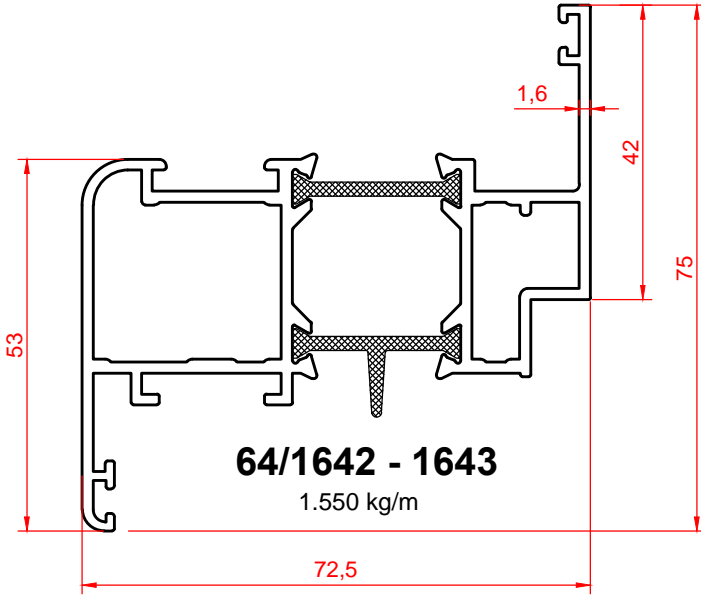
**64/1710 - 1711**  
1.638 kg/m



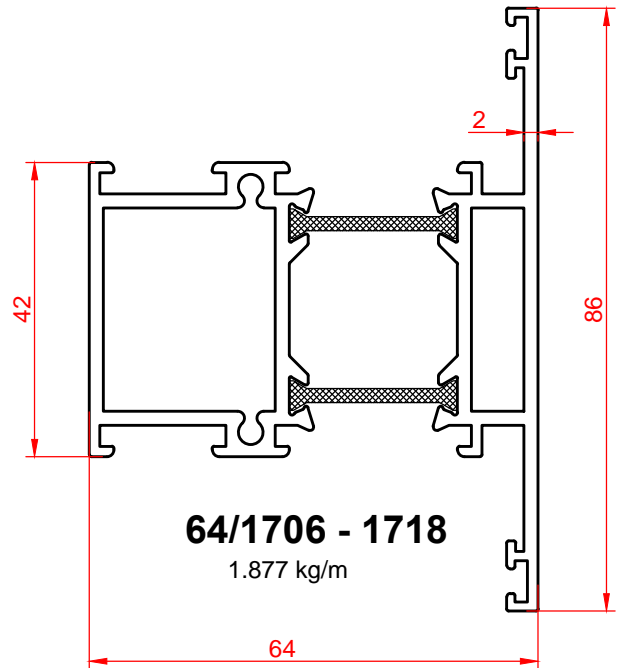
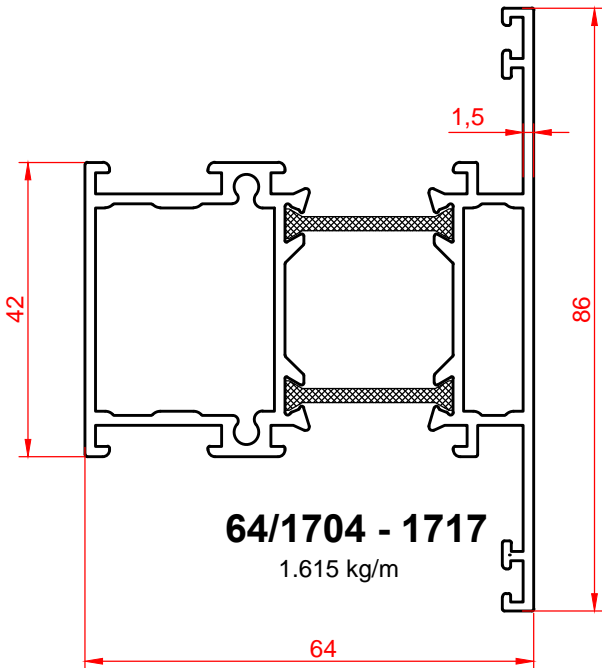
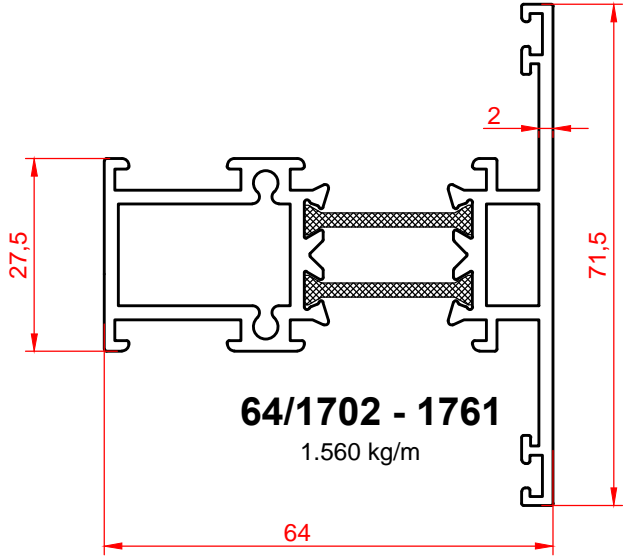
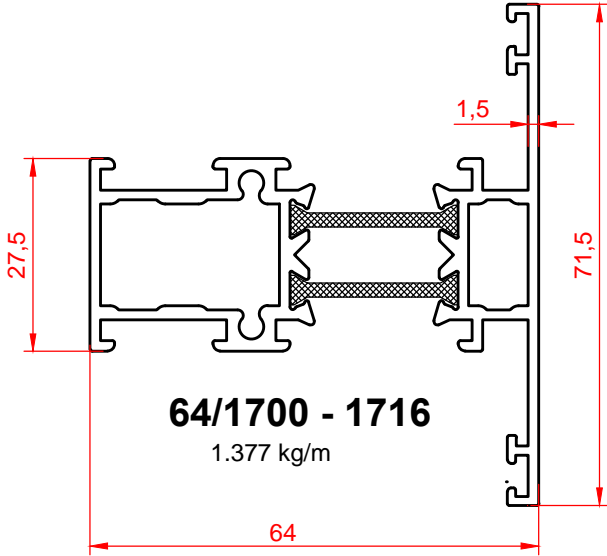
**64/1712 - 1713**  
1.589 kg/m

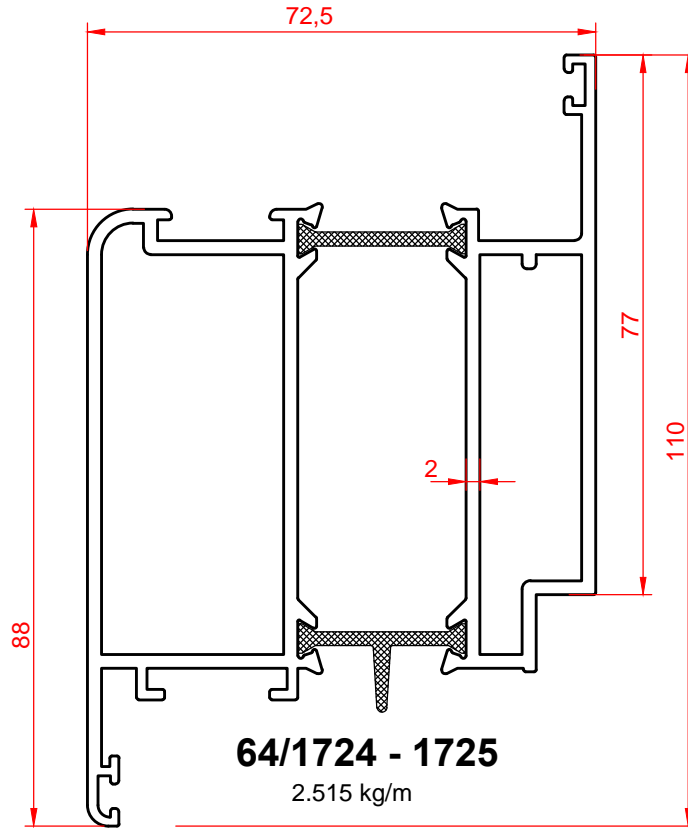
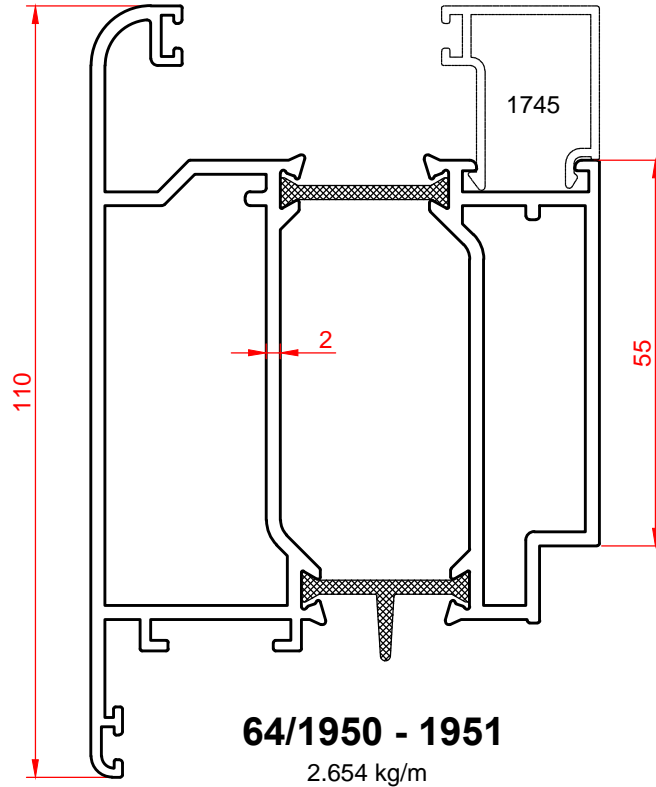


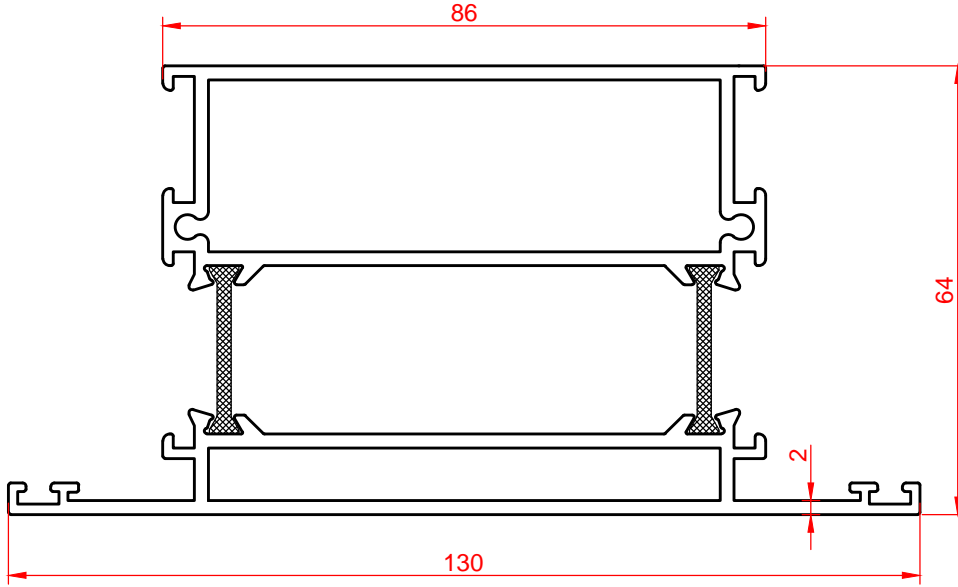
**64/1714 - 1715**  
1.953 kg/m





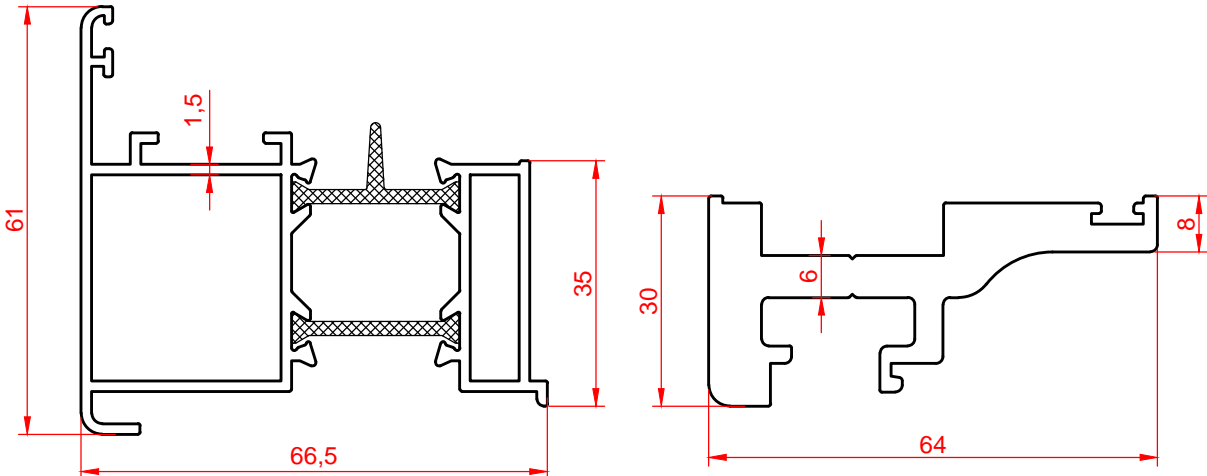






**64/1719 - 1720**

2.839 kg/m

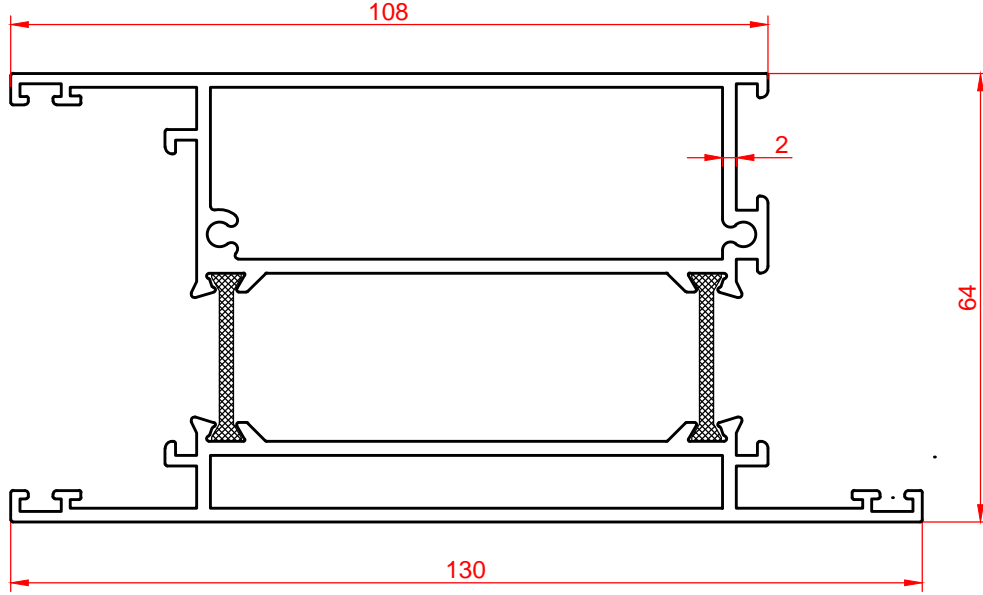


**64/1729 - 1728**

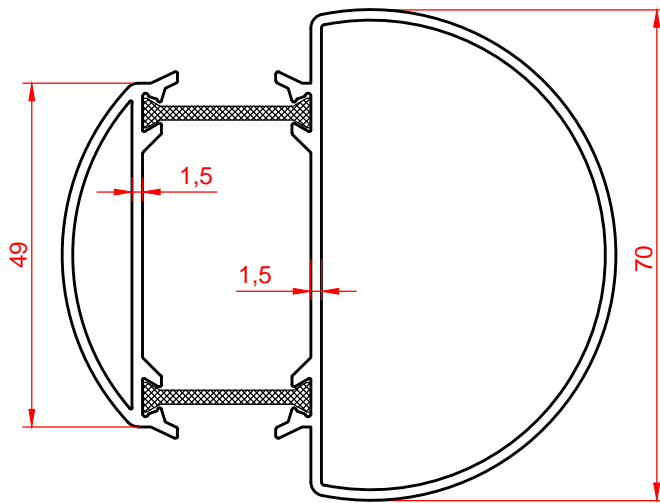
2.723 kg/m

**2235**

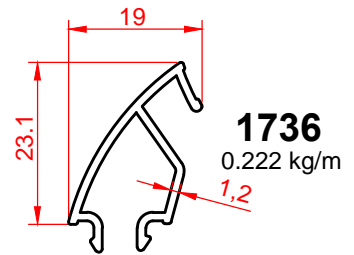
1.897 kg/m



**64/1720 - 1721**  
2.977 kg/m

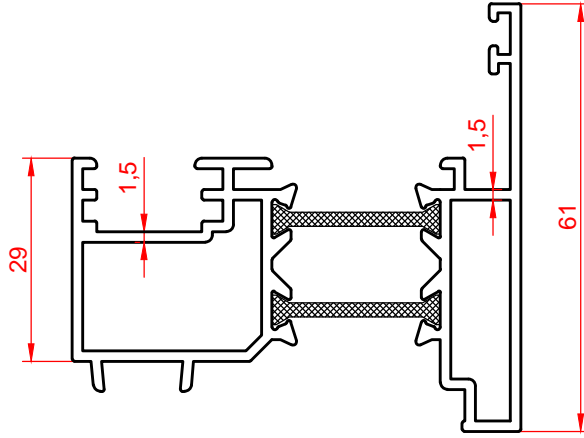


**64/1734 - 1735**  
1.457 kg/m

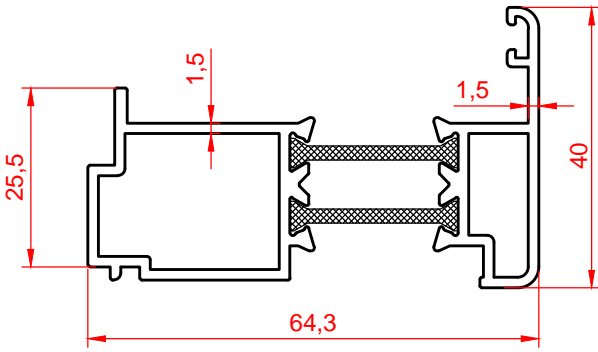


**1736**  
0.222 kg/m

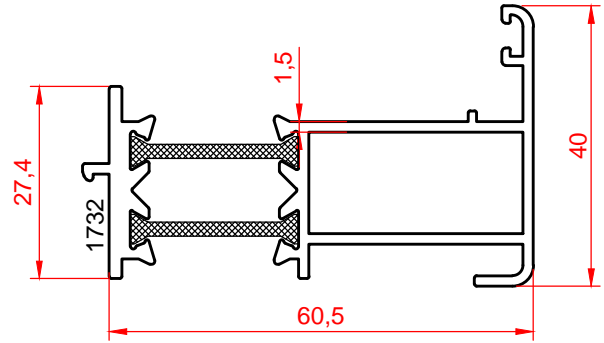
69 mm.'lik kasa ile birlikte  
1736 ve 1734-1735 kullanılır.



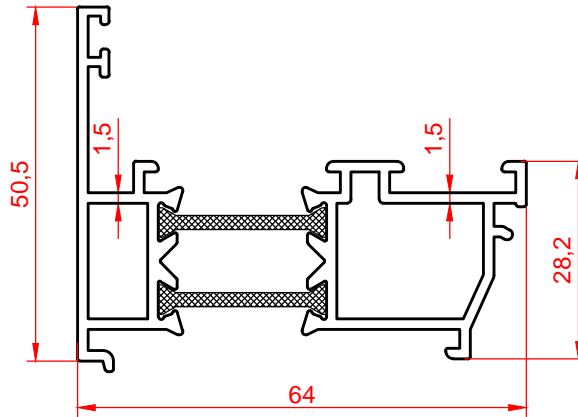
**64/1726 - 1727**  
1.337 kg/m



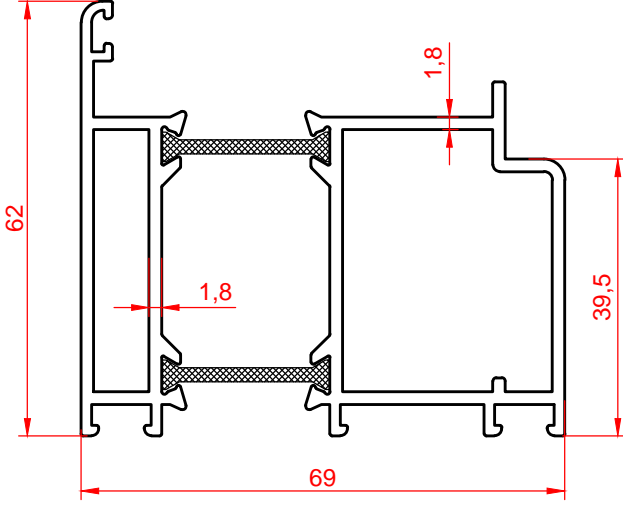
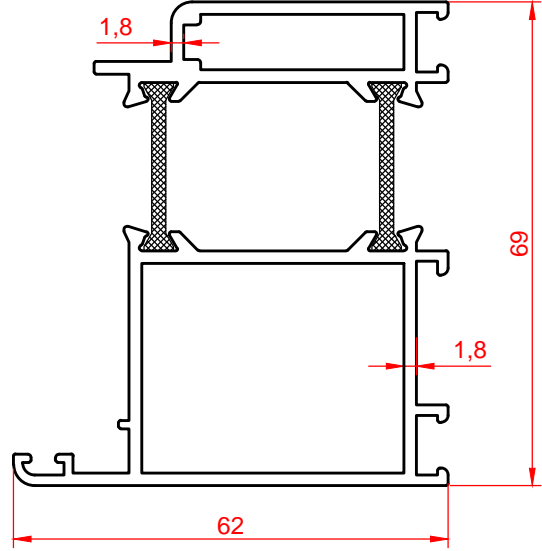
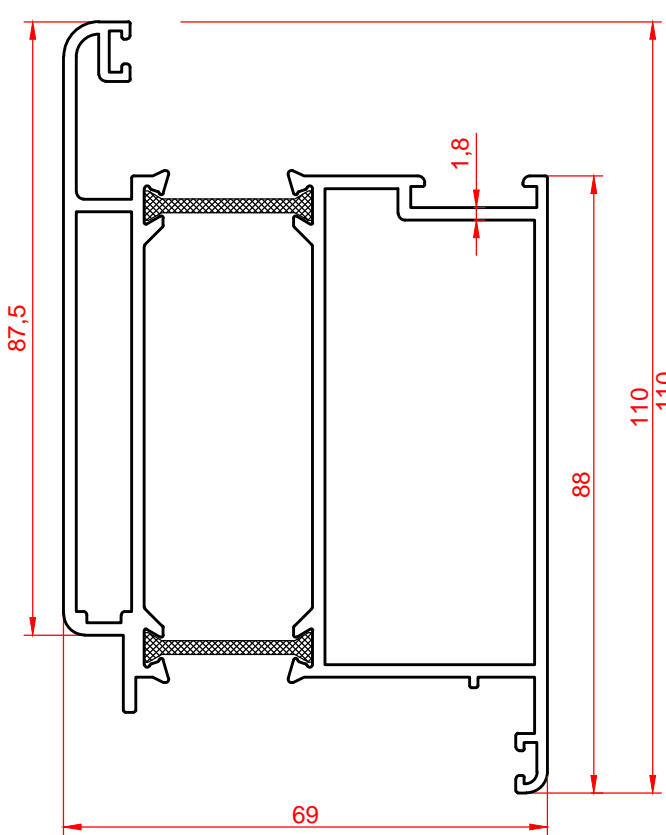
**64/1730- 1731**  
1.014 kg/m



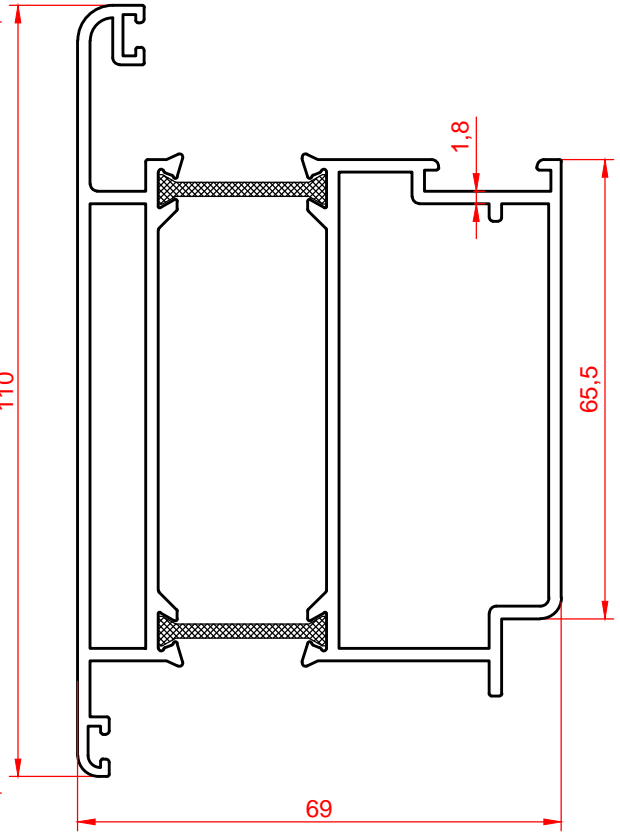
**64/1732 - 1733**  
1.019 kg/m



**64/1762 - 1763**  
1.132 kg/m

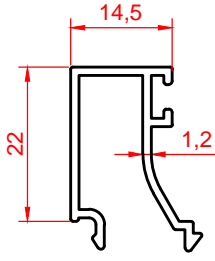
**64/1737 - 1738****64/1739 - 1740****64/1741 - 1742**

2.343 kg/m

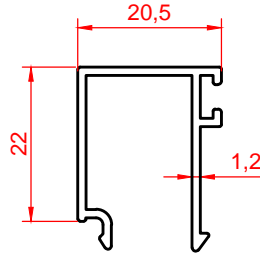
**64/1743 - 1744**

2.351 kg/m

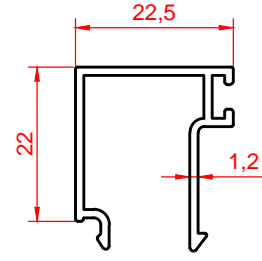
A-10 SAYFASINDAKİ PROFİLLER BİRLİKTE ÇALIŞIR.EK OLARAK 64/1730-1731,64/1732-1733 İLE ÇALIŞIR.



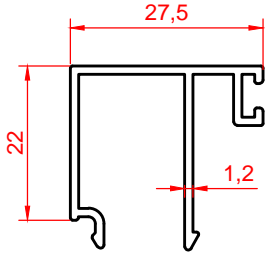
**1698**  
0.252 kg/m



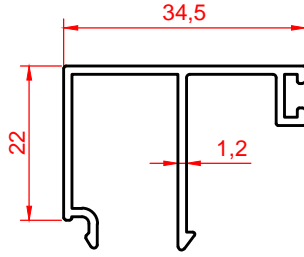
**1699**  
0.262 kg/m



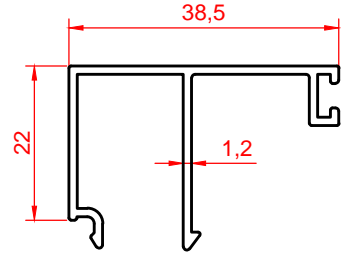
**1745**  
0.271 kg/m



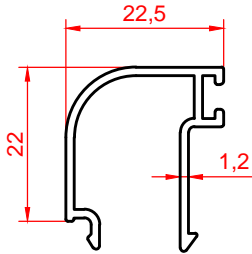
**2236**  
0.306 kg/m



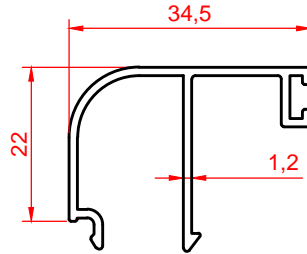
**1747**  
0.331 kg/m



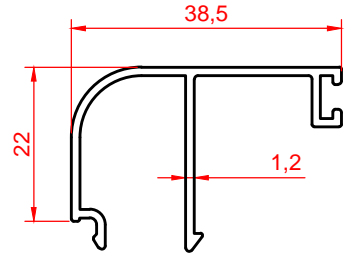
**1749**  
0.344 kg/m



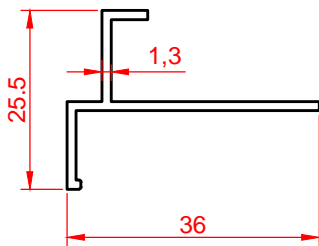
**1746**  
0.258 kg/m



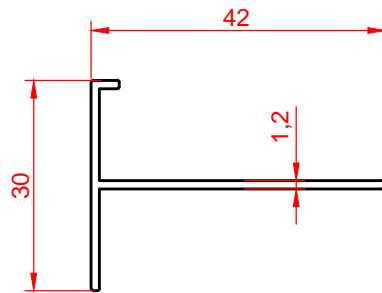
**1748**  
0.317 kg/m



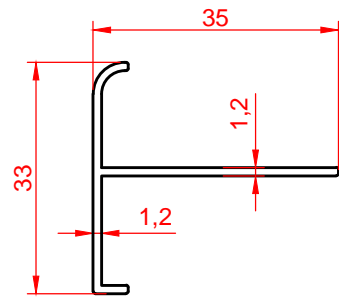
**1750**  
0.330 kg/m



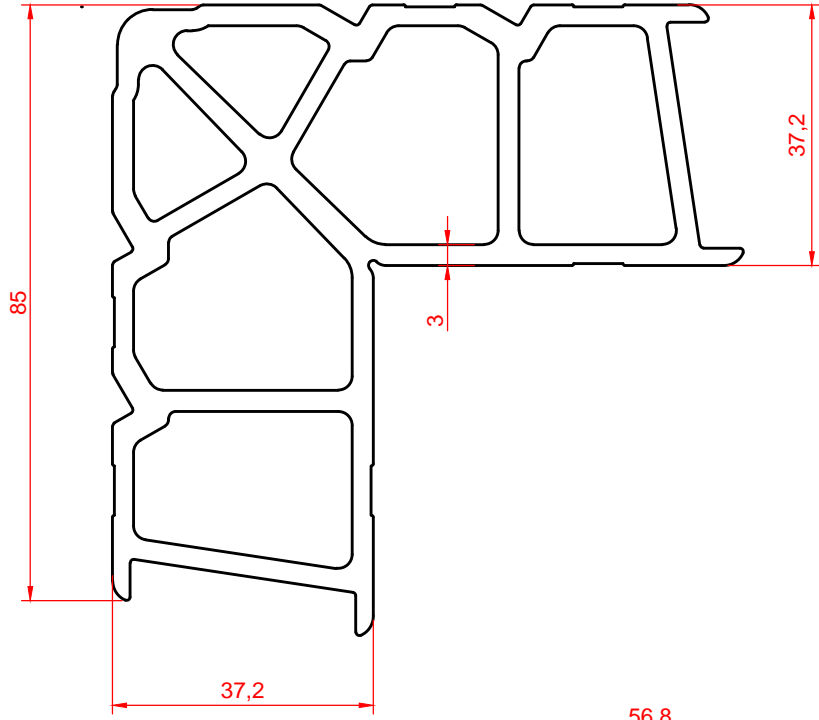
**1121**  
0.232 kg/m



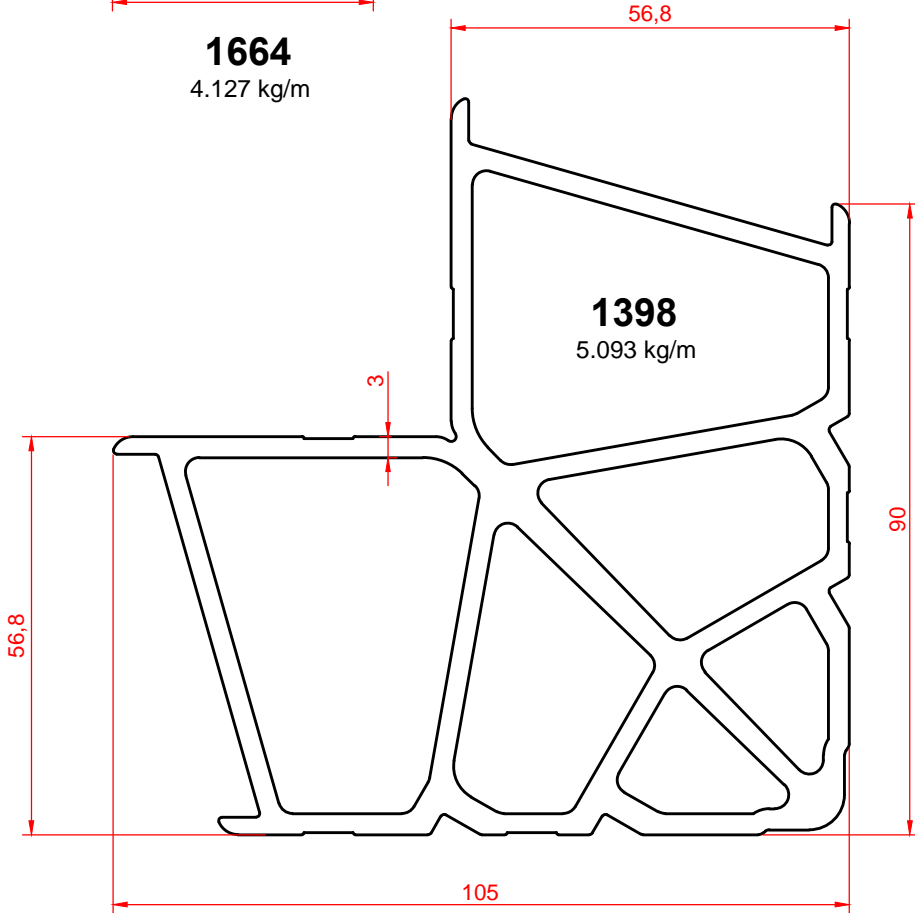
**1035**  
0.239 kg/m



**1139**  
0.239 kg/m

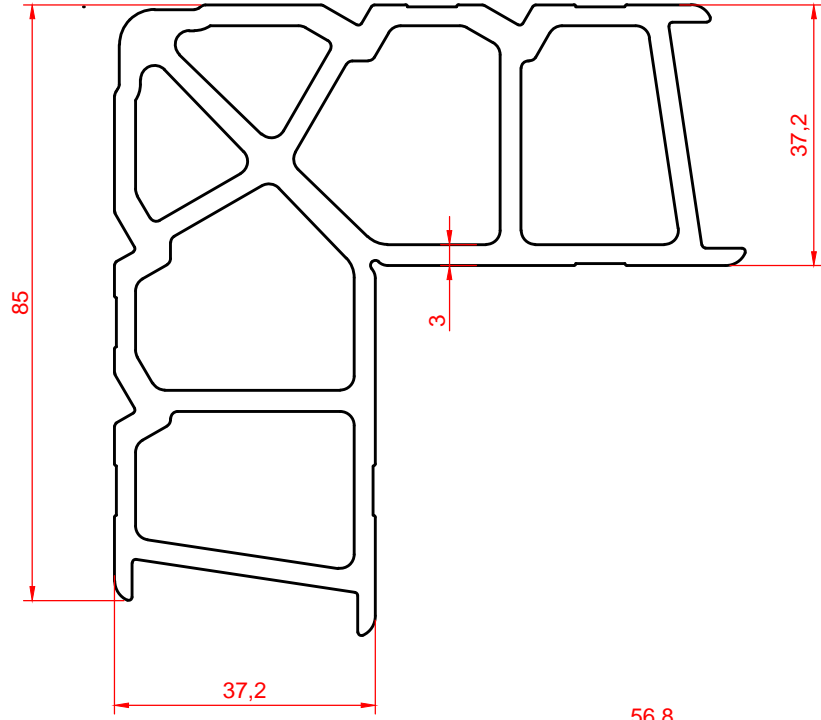


**1664**  
4.127 kg/m

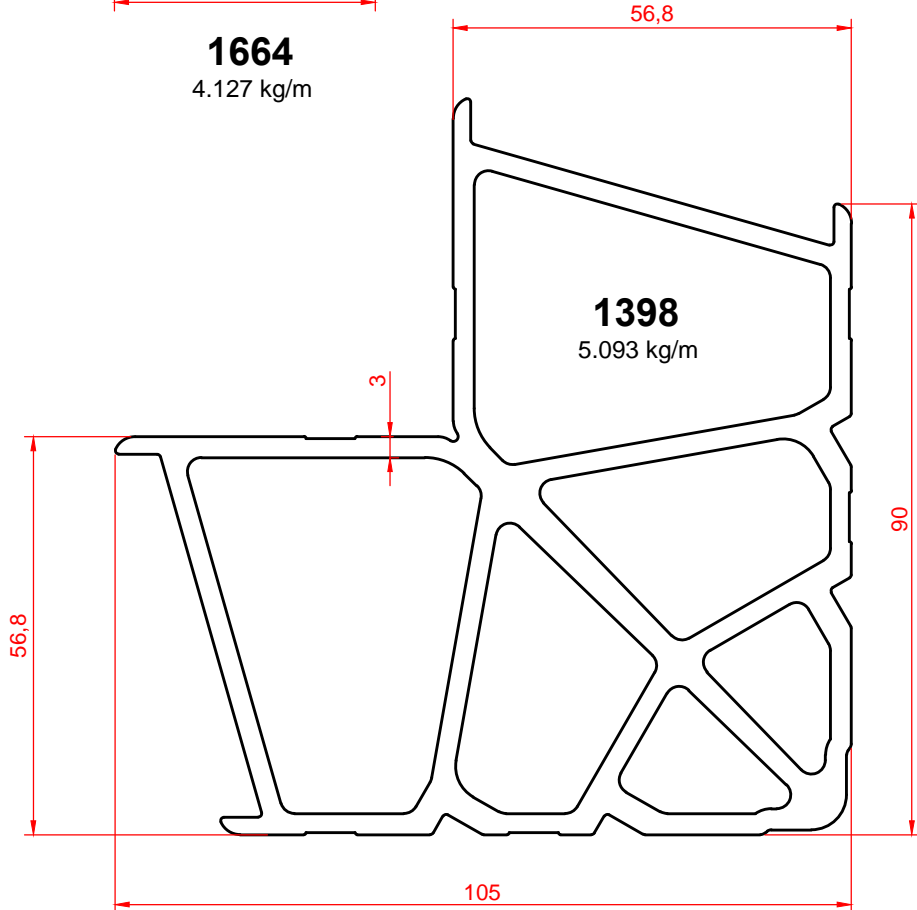


**1398**  
5.093 kg/m

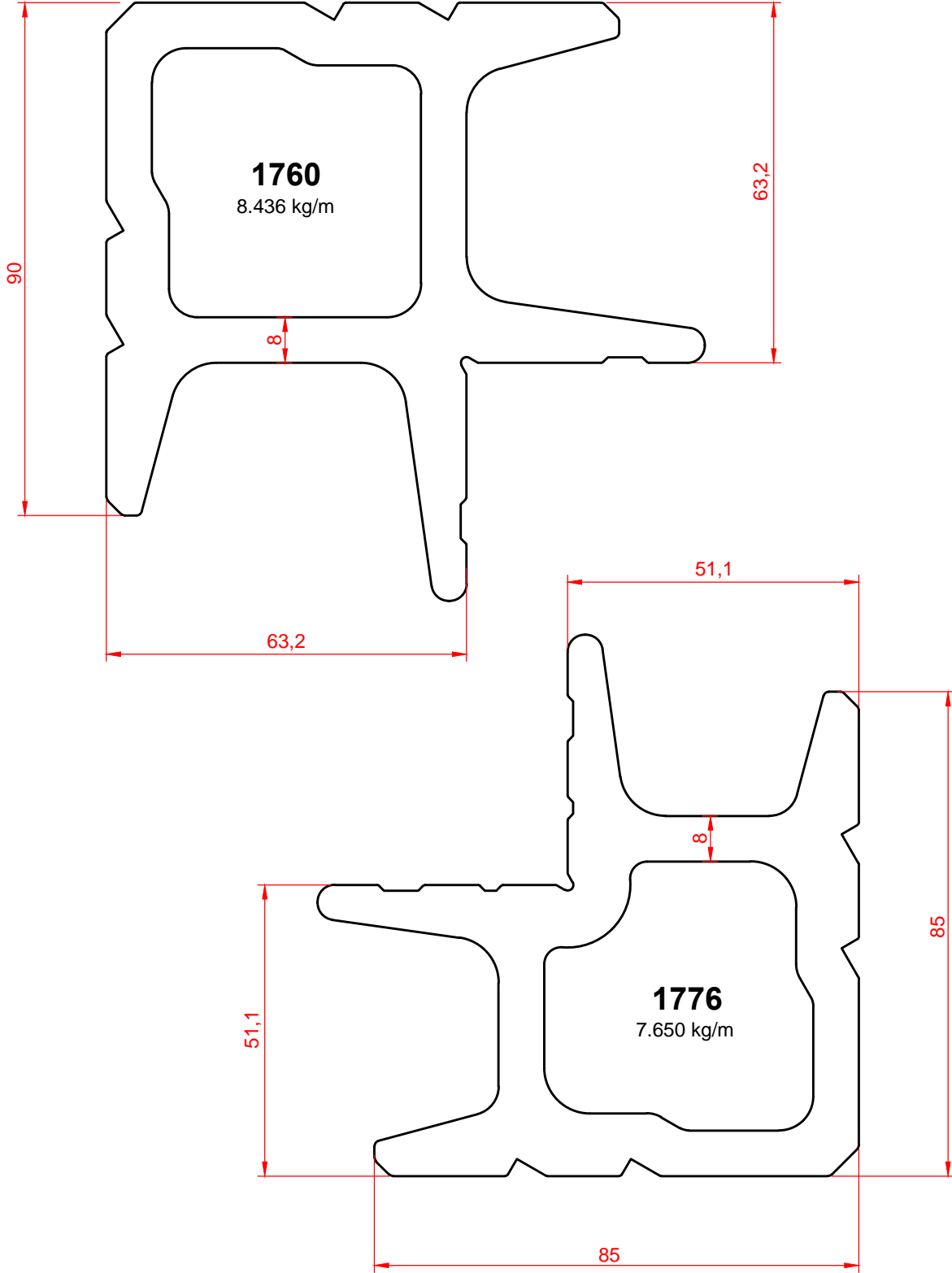


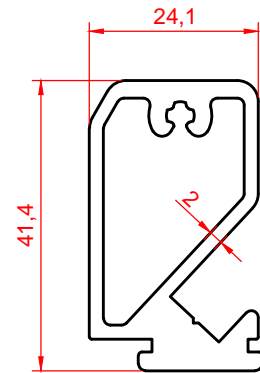
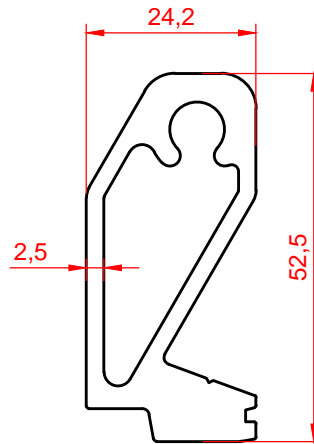
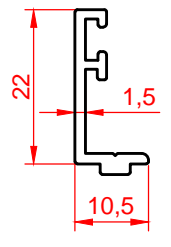
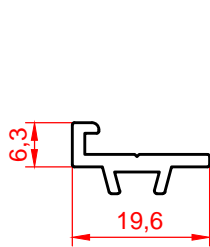
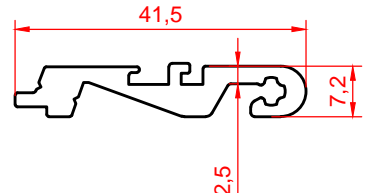
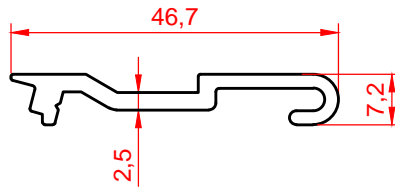
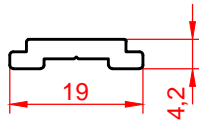
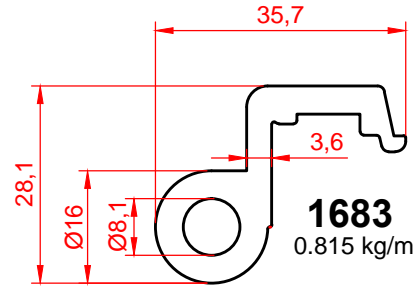
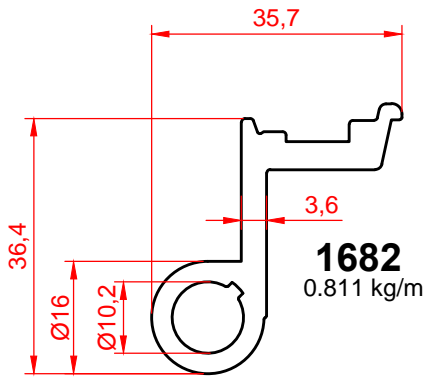
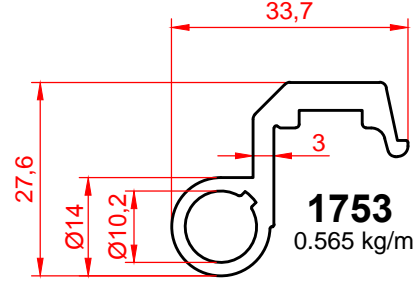
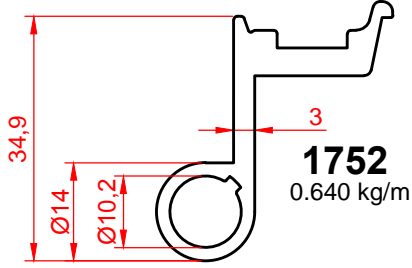


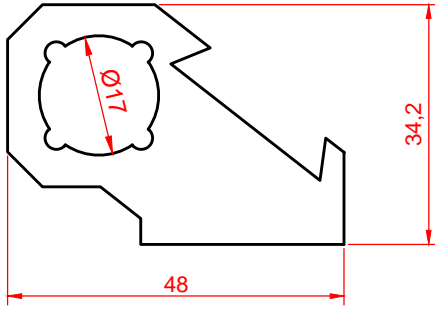
**1664**  
4.127 kg/m



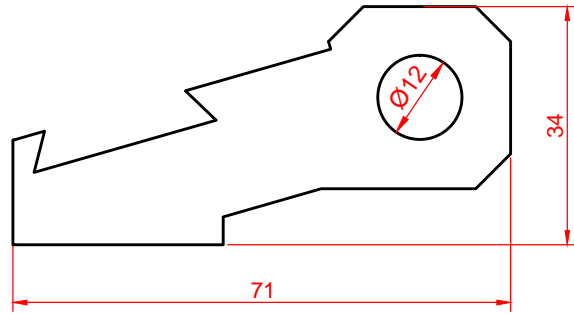
**1398**  
5.093 kg/m



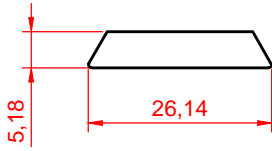




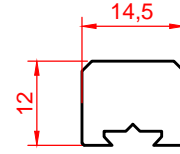
**2150**  
2.218 kg/m



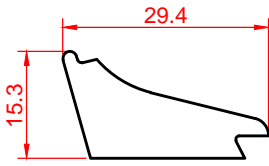
**2151**  
3.437 kg/m



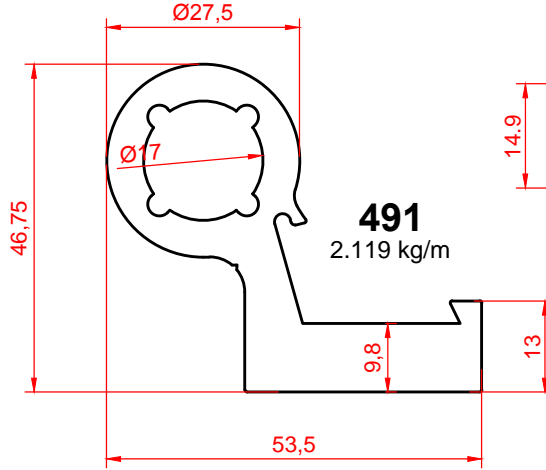
**2155**  
0.333 kg/m



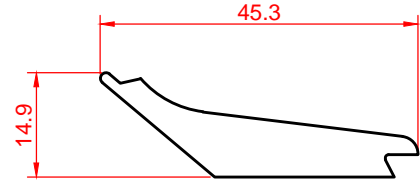
**2154**  
0.422 kg/m



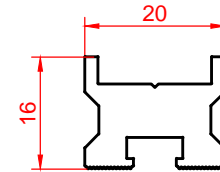
**462**  
0.638 kg/m



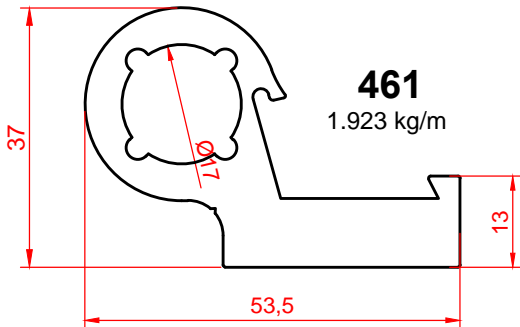
**491**  
2.119 kg/m



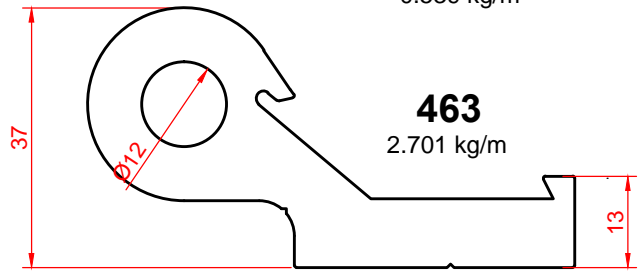
**464**  
0.754 kg/m



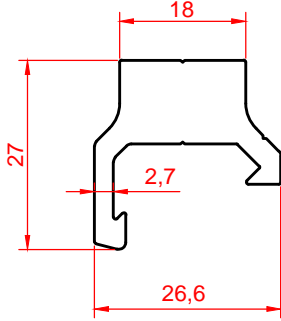
**2140**  
0.539 kg/m



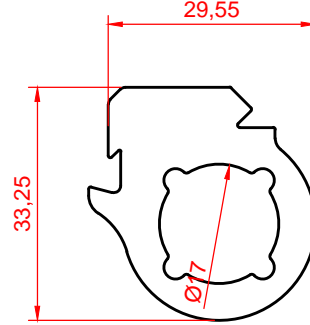
**461**  
1.923 kg/m



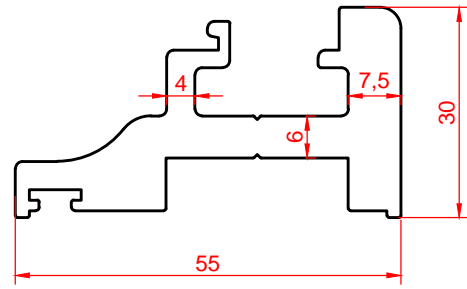
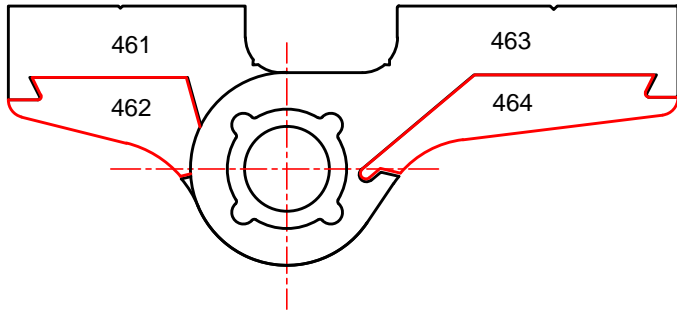
**463**  
2.701 kg/m



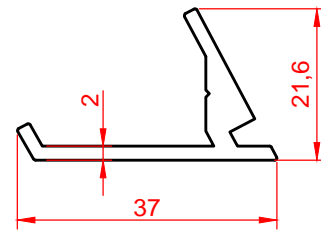
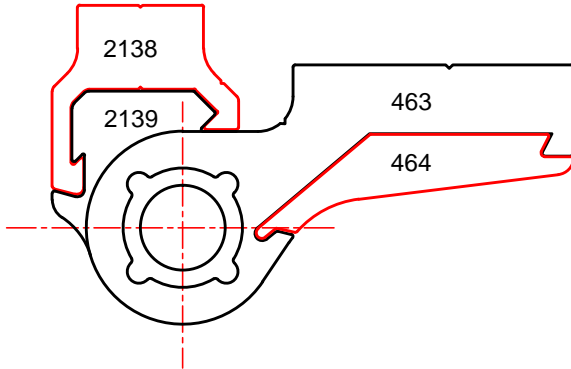
**2138**  
0.823 kg/m



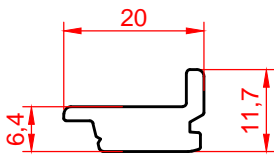
**2139**  
1.438 kg/m



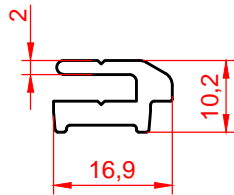
**2052**  
1.724 kg/m



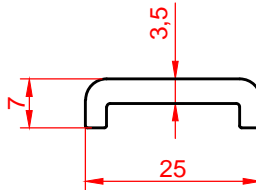
**1011**  
0.402 kg/m



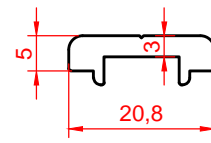
**1764**  
0.312 kg/m



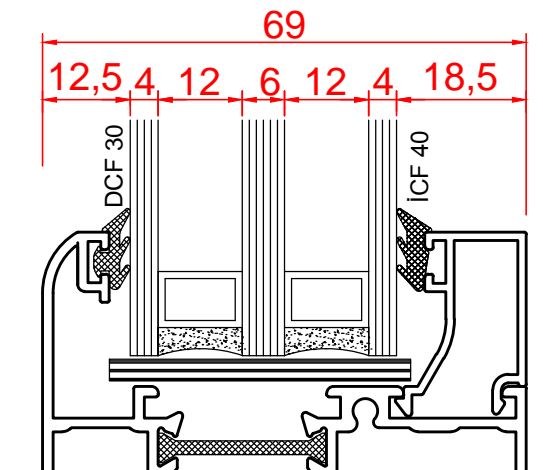
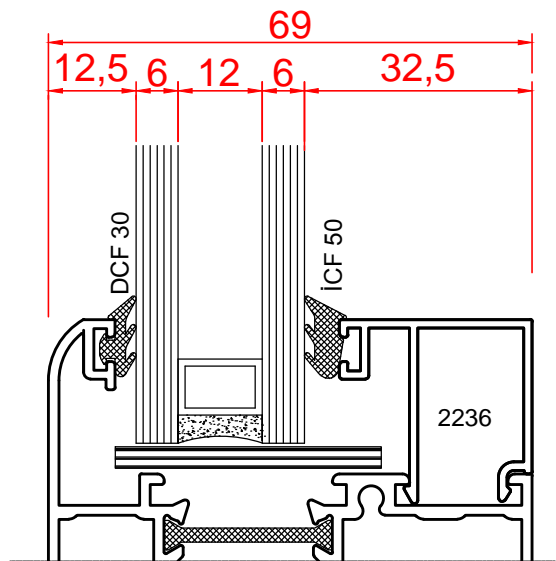
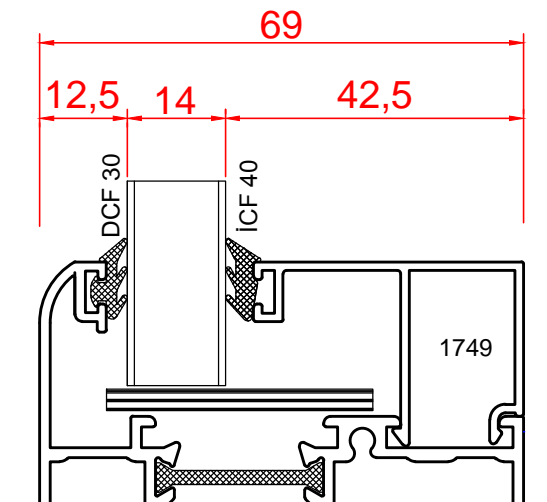
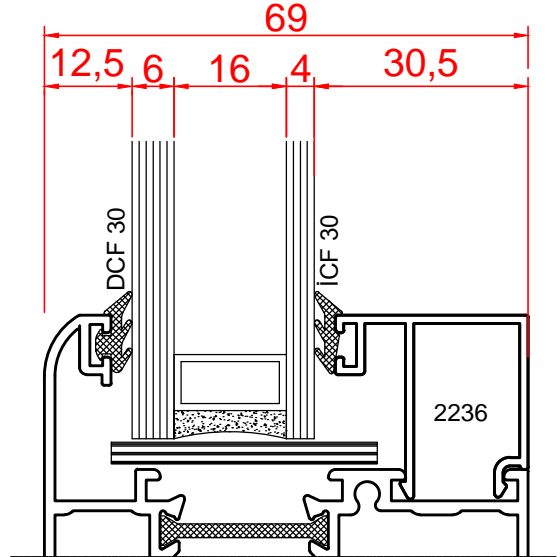
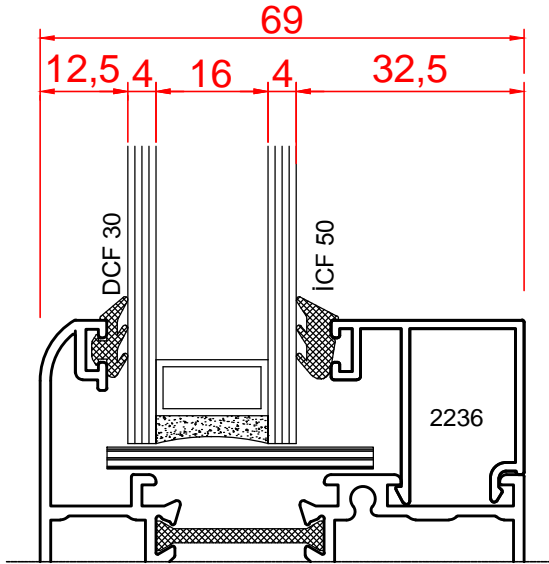
**1767**  
0.263 kg/m

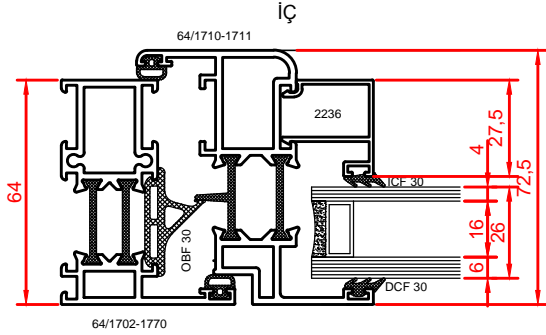


**1754**  
0.285 kg/m



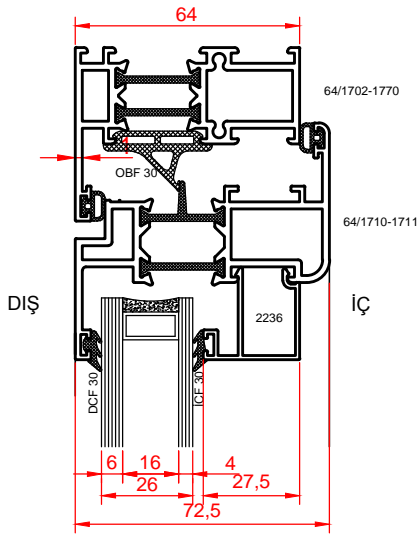
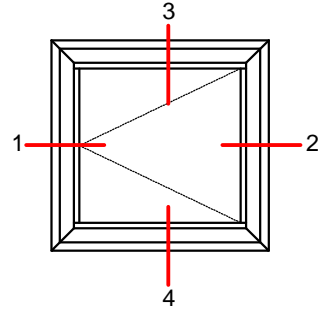
**1755**  
0.234 kg/m



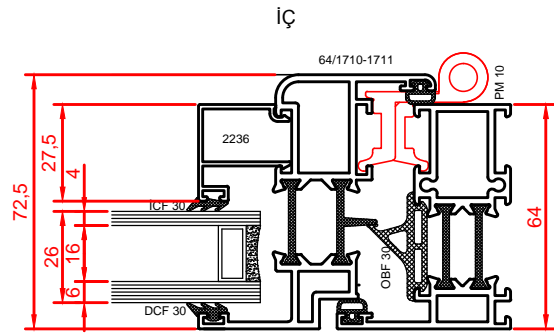


DIŞ

**DETAY - 1**

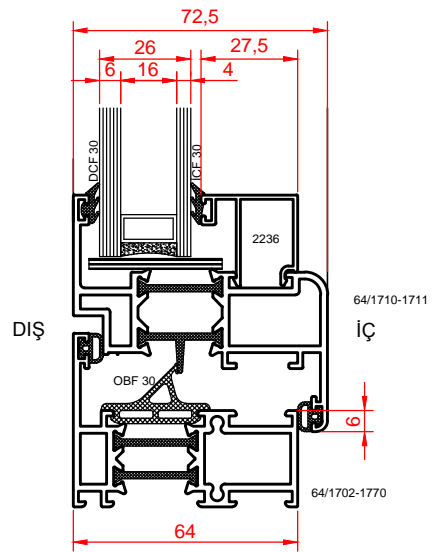


**DETAY - 3**

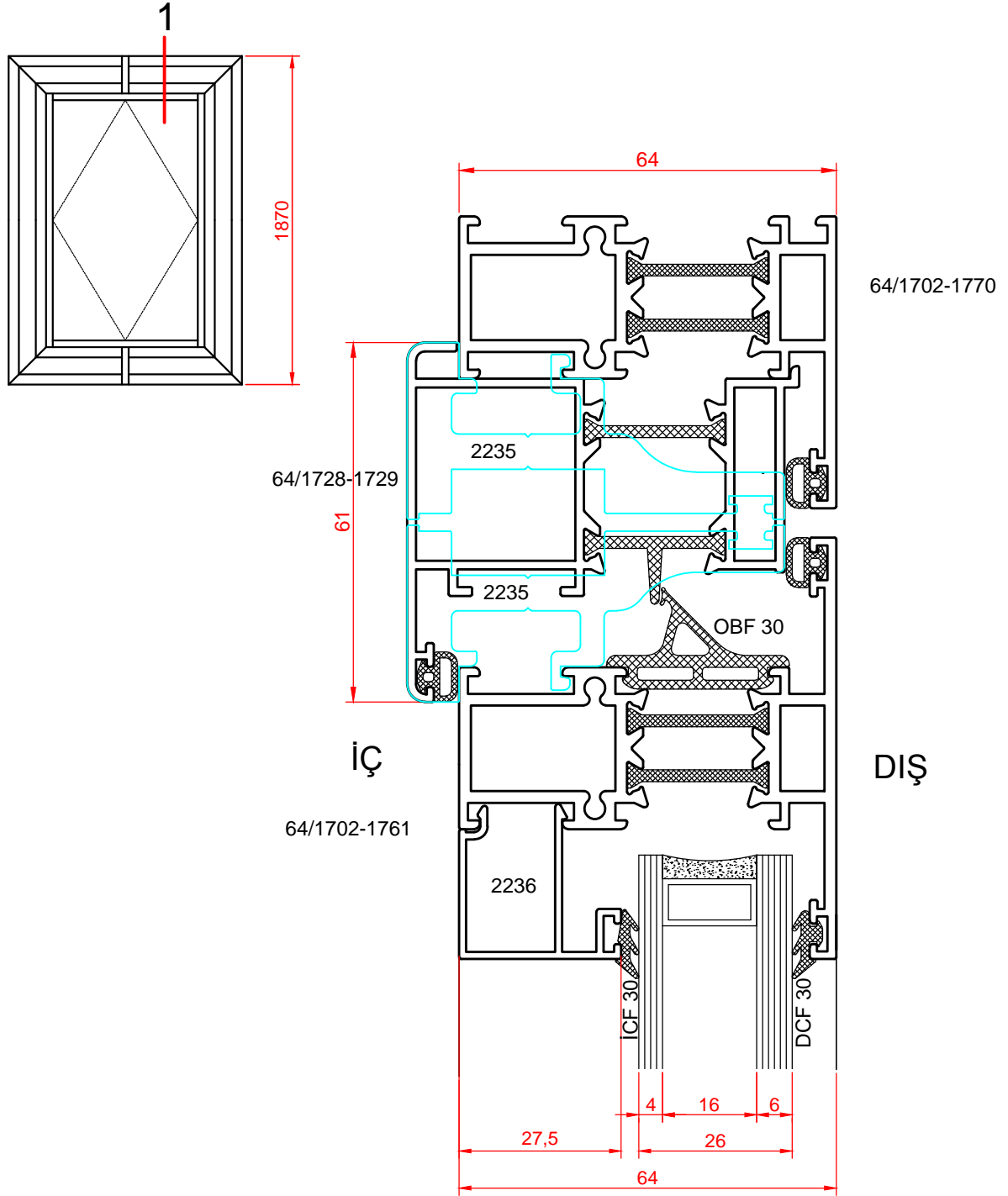


DIŞ

**DETAY - 2**

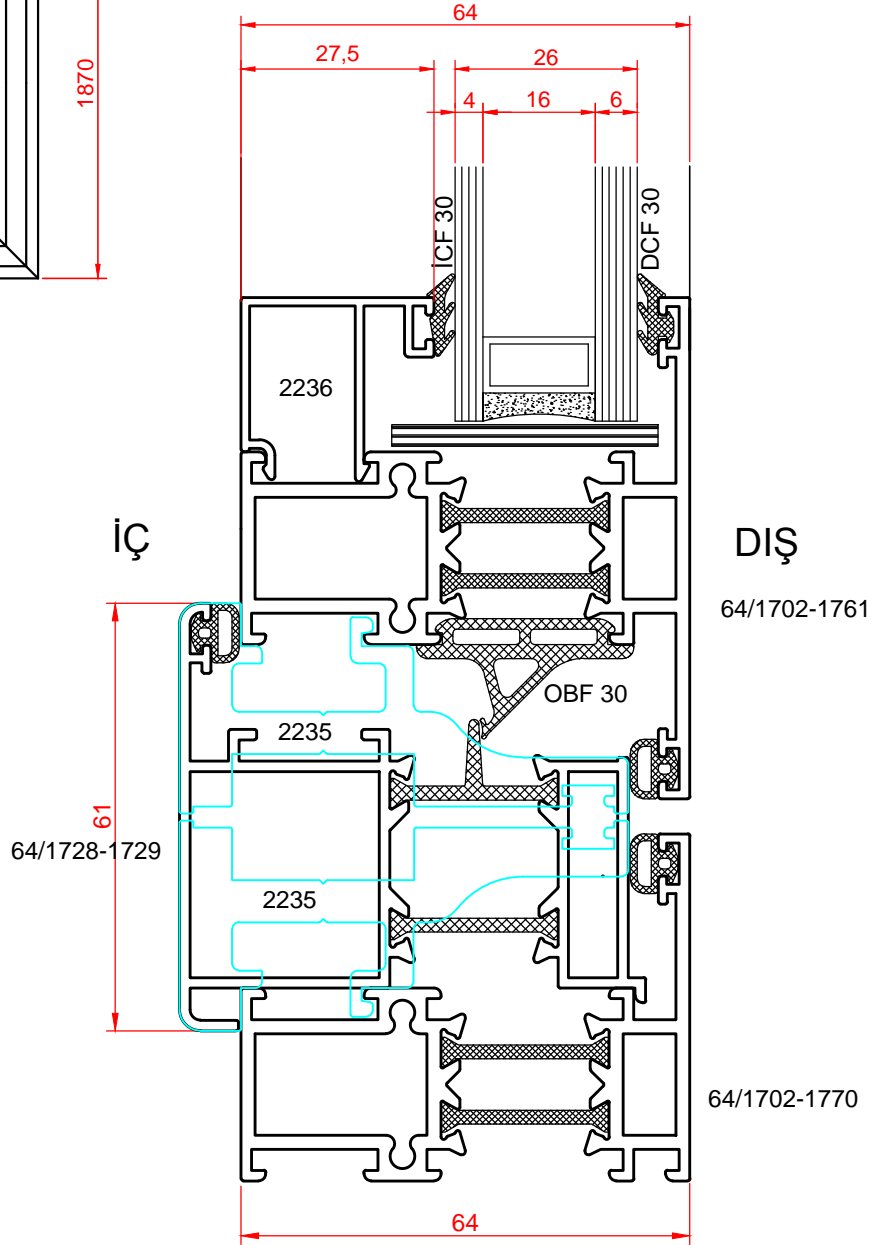
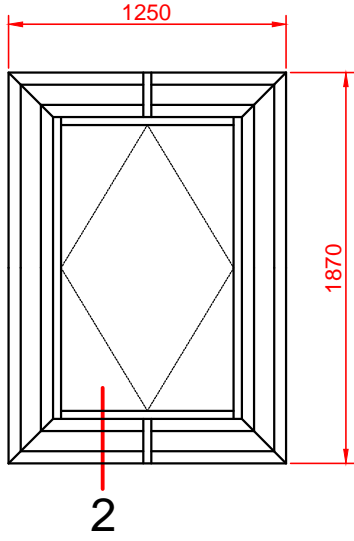


**DETAY - 4**

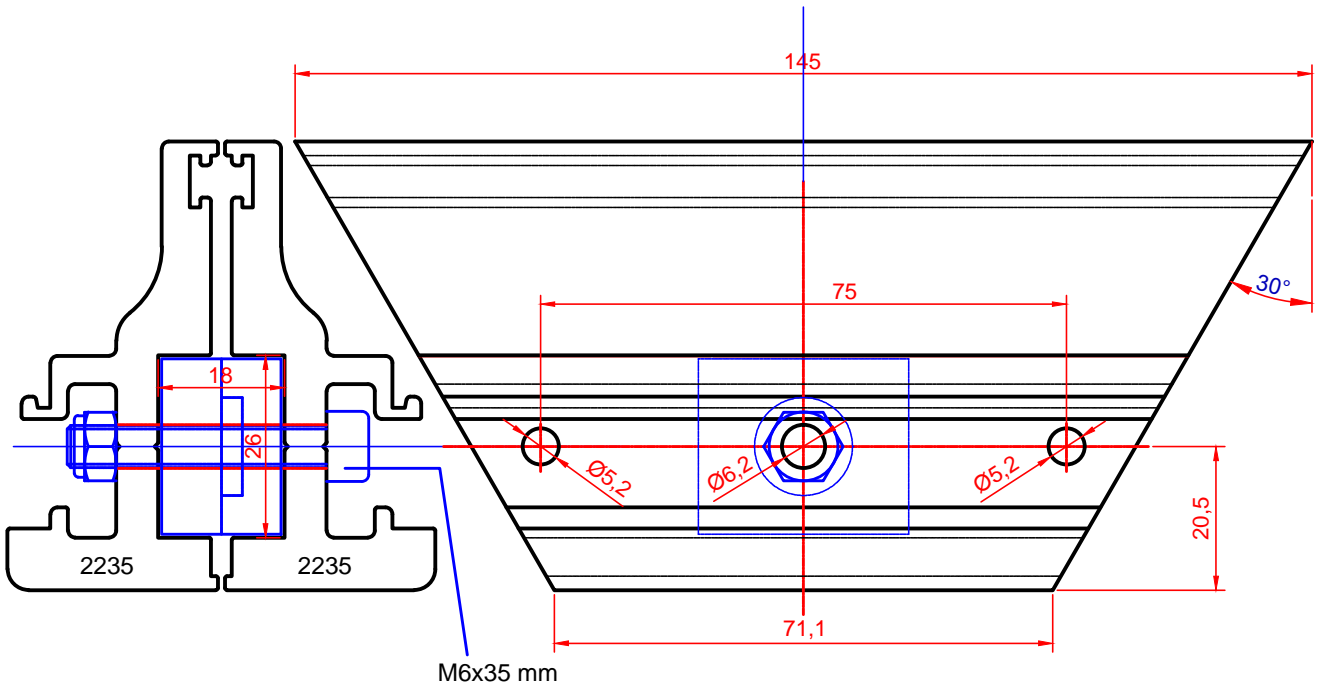
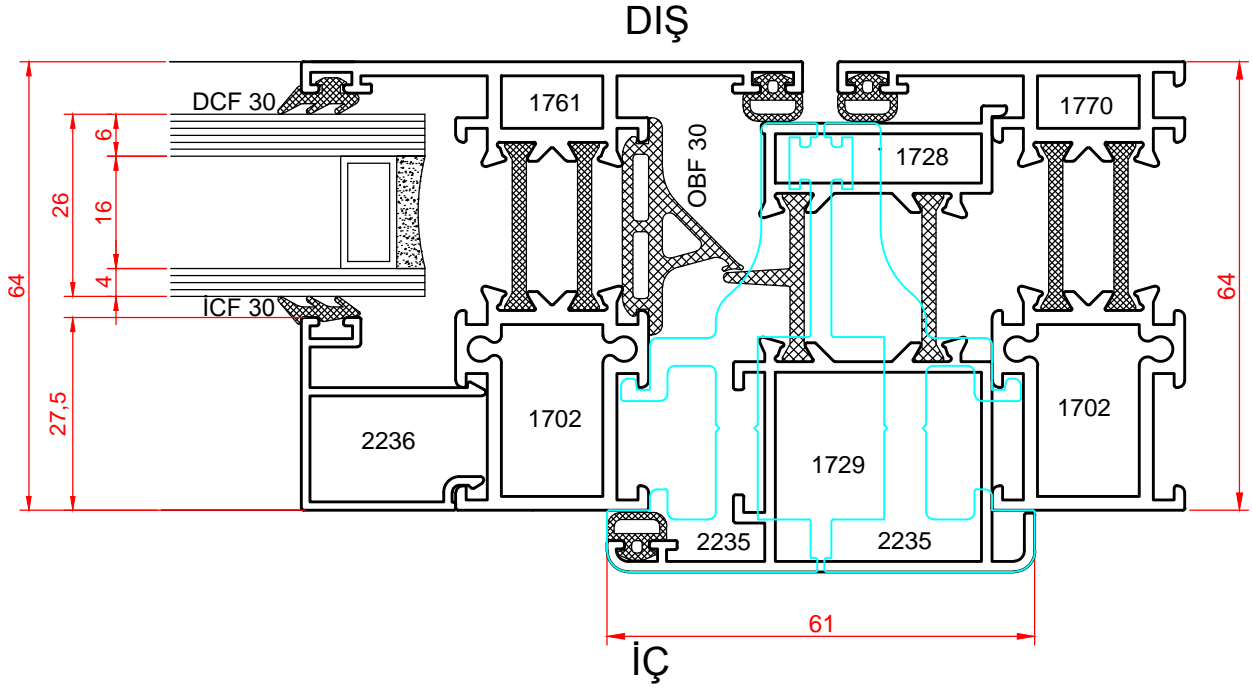


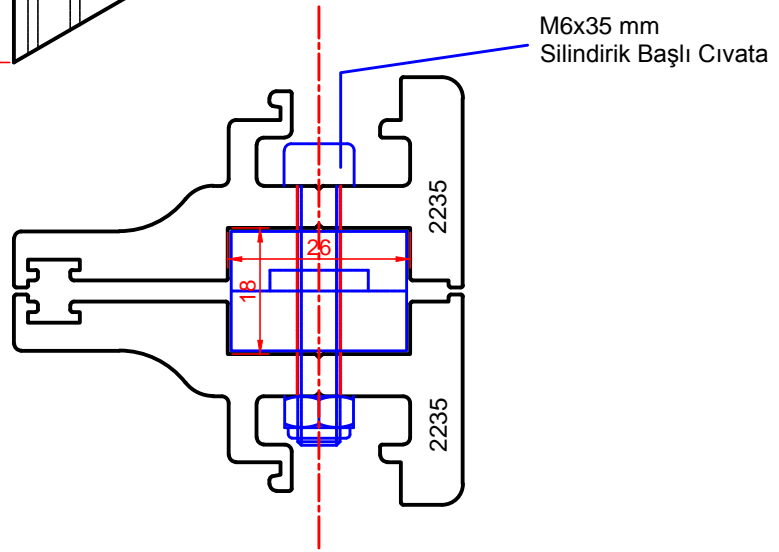
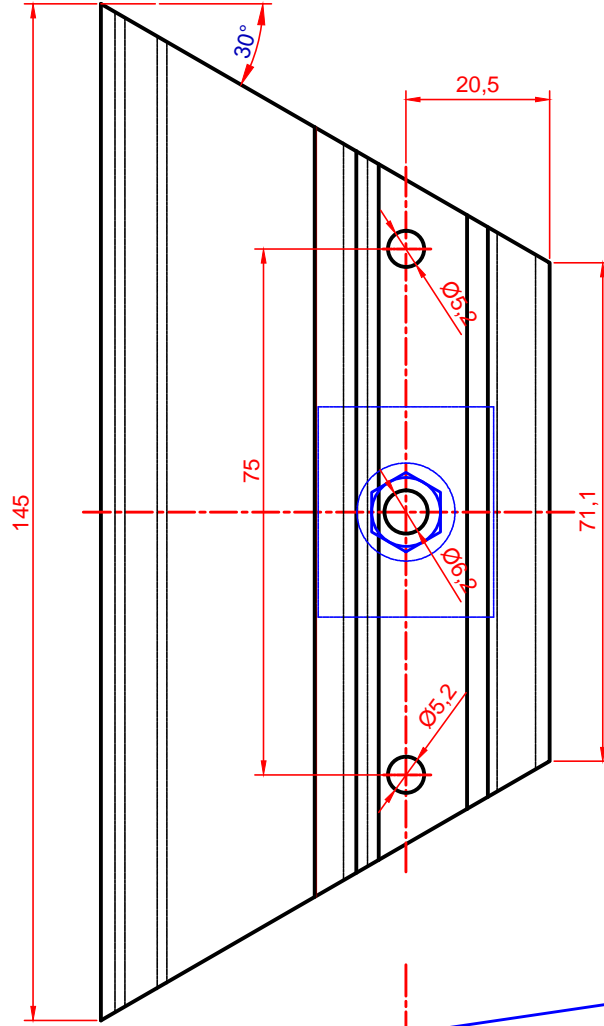
**DETAY - 1**

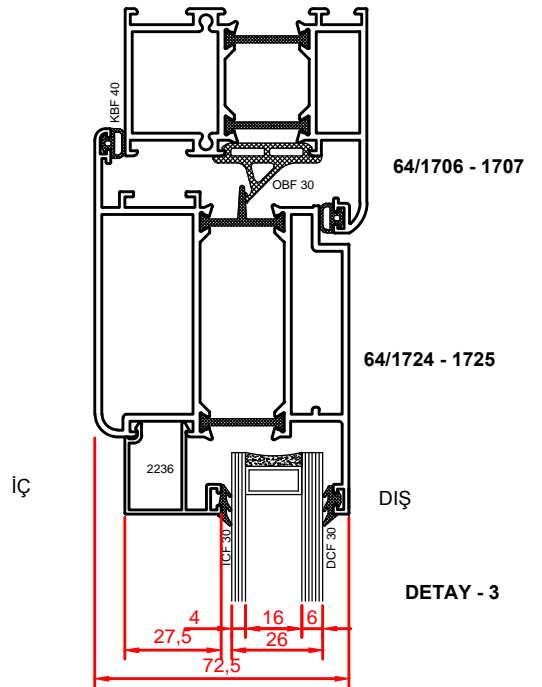
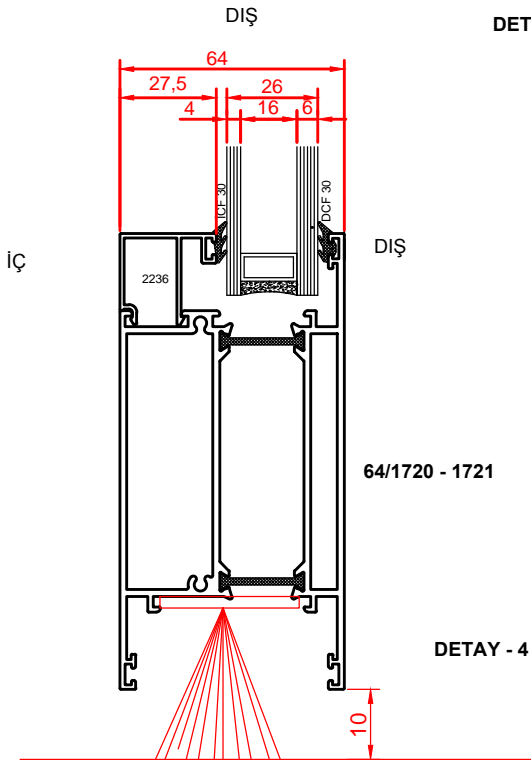
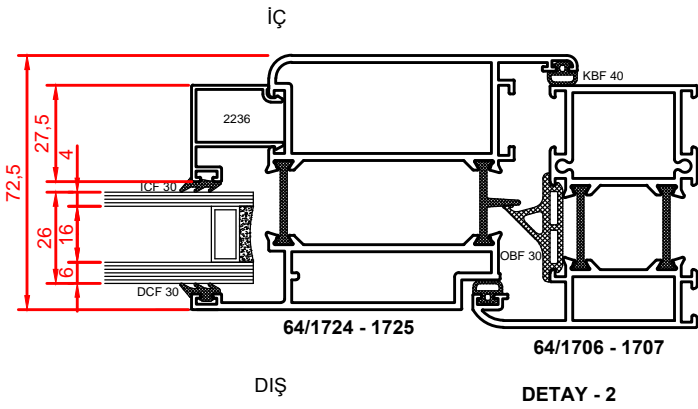
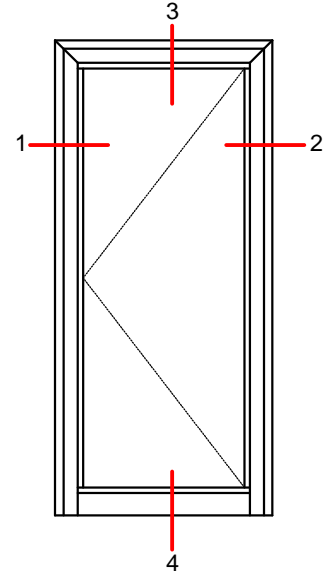
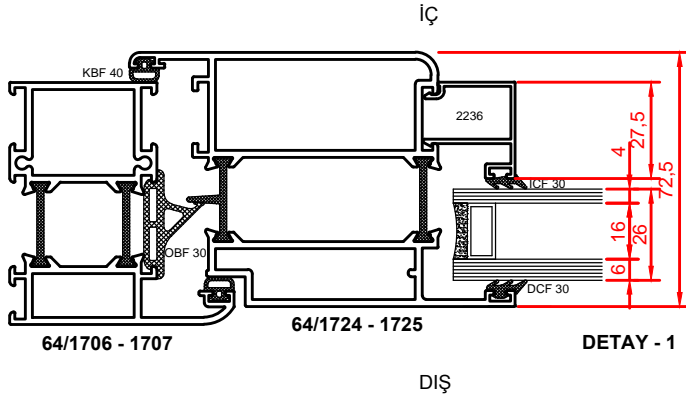


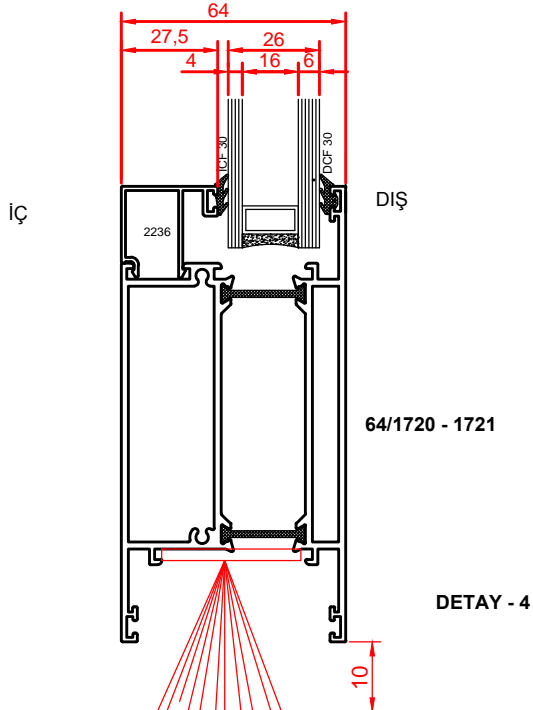
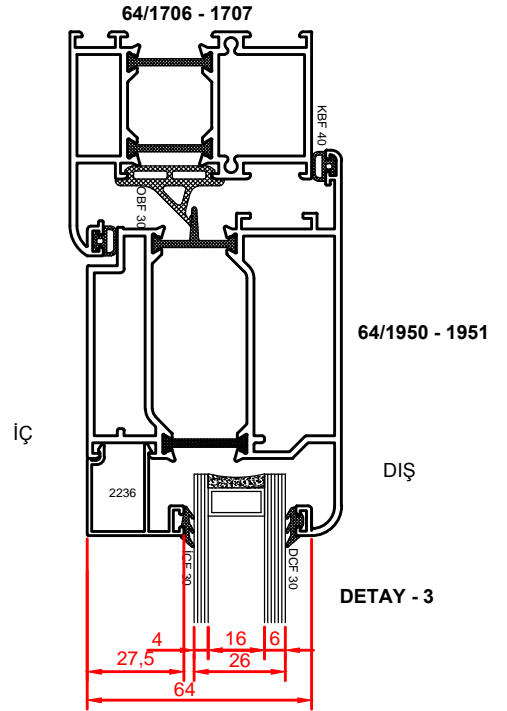
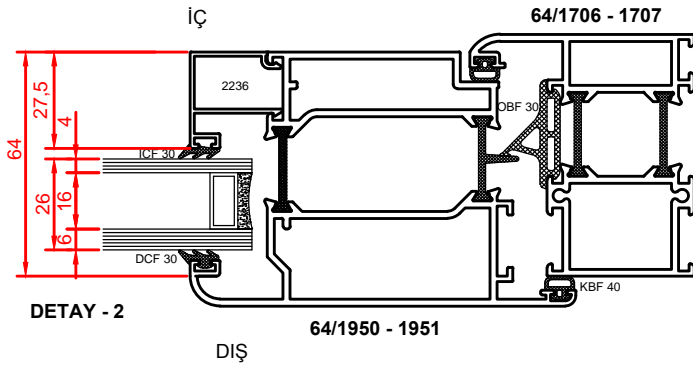
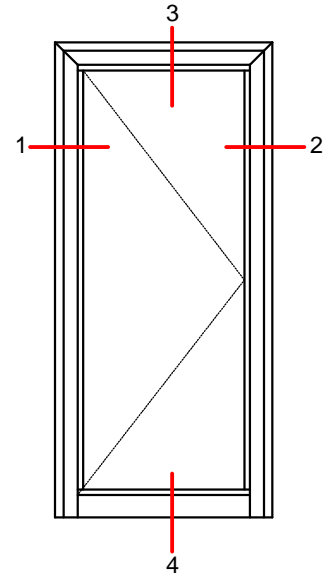
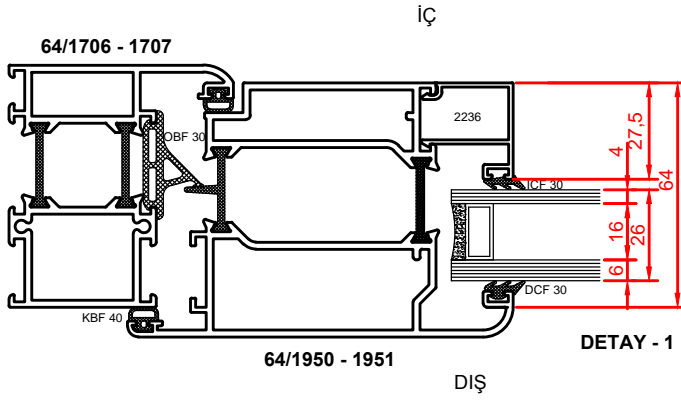


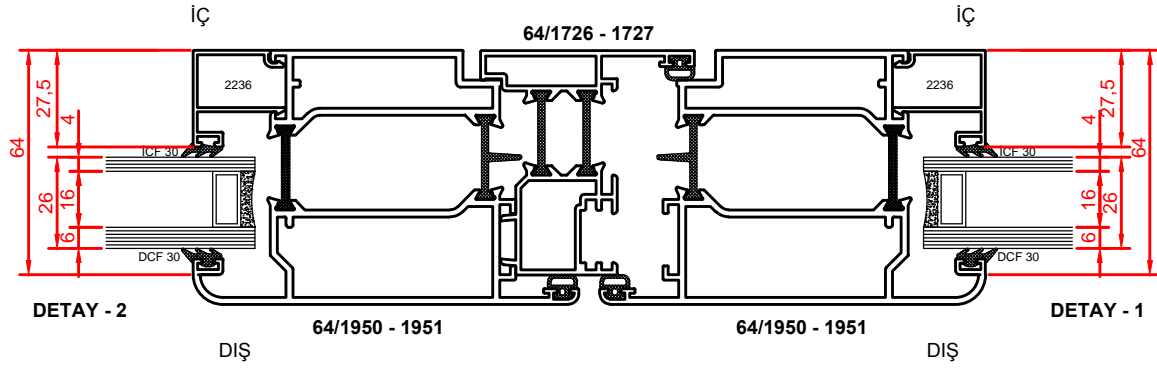
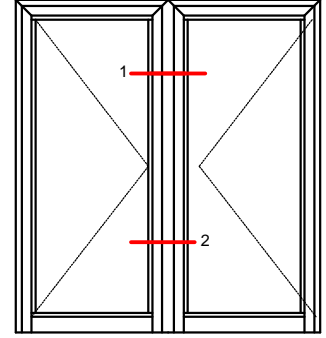
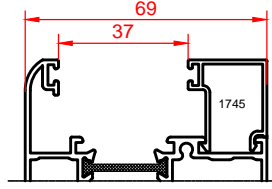
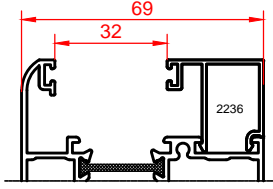
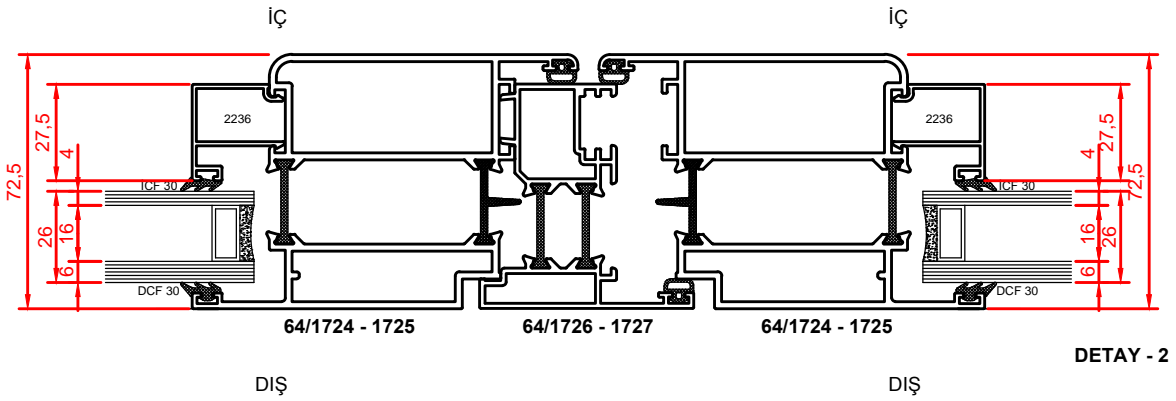
**DETAY - 2**






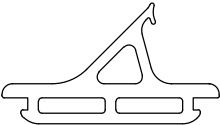








**DIŞA AÇILIR KAPIDA ADÖPTÖR DETAYI****İÇE AÇILIR KAPIDA ADÖPTÖR DETAYI**

KOD NO.	ŞEKİL	ADI	MALZEME
03 010503		DCF 30 Dış Cam Fitili 3 mm	EPDM 1 Paket/15kg./320 Metre
03 011230		İCF 30 İç Cam Fitili 3 mm	EPDM 1 Paket/15kg./415 Metre
03 011231		İCF 40 İç Cam Fitili 4 mm	EPDM 1 Paket/15kg./360 Metre
03 010732		İCF 50 İç Cam Fitili 5 mm	EPDM 1 Paket/15kg./280 Metre
03 010440		KBF 40 Kulak Bini Fitili	EPDM 1 Paket/12kg./265 Metre
03 011030		OBF 30 Orta Bini Fitili	EPDM 1 Paket/11kg./50 Metre
05 011106		96MM BAREL	

NOT:İZO WD 55 SİSTEMDEKİ AKSESUARLARIN TAMAMINI KULLANMAKTADIR.  
FARKLI OLARAK OBF 30 VE BAREL DEĞİŞMEKTEDİR.